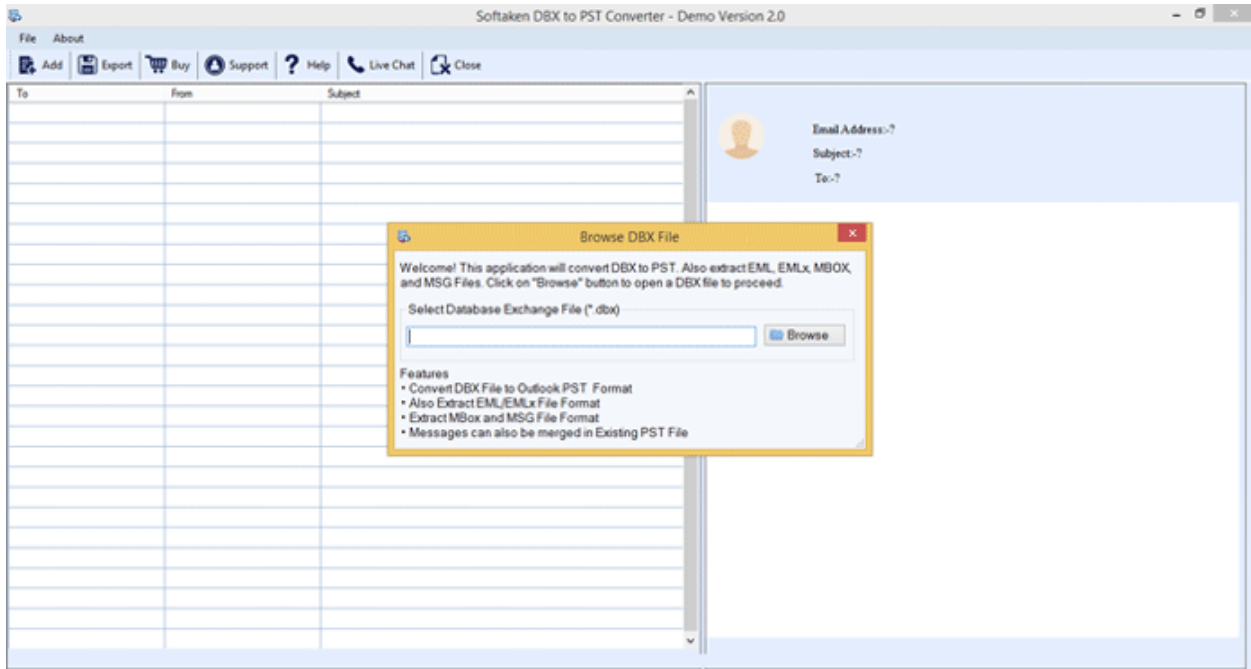
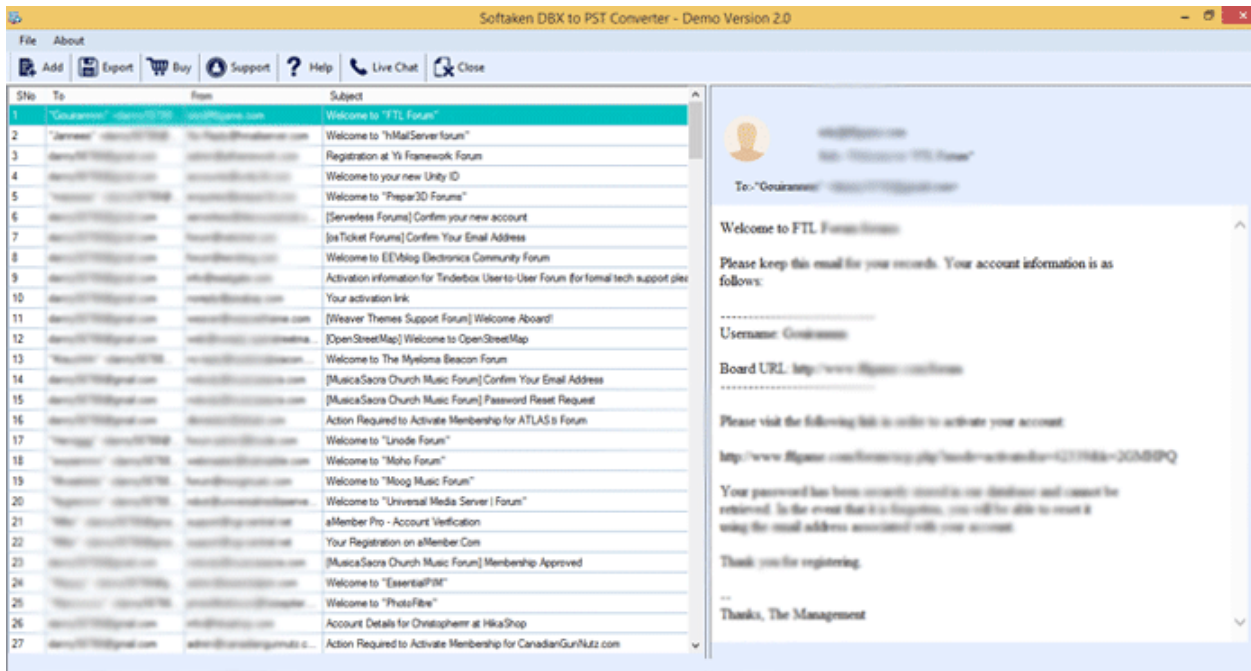


Steps to Convert DBX to PST

Step 1. Launch the SysCurve DBX to PST Converter.



Step 2. Click on the Browse button, select the DBX file and click on the OK button.



Step 3: Click on the Export and select the PST as an Export Type. Provide a location to save the PST and click on the Export button.

The image shows a dialog box titled "Export Options" with a yellow header bar. It contains three main sections:

- Export Type:** A group box containing five radio button options: "Convert to PST (*.pst)" (selected), "MSG File Format (*.msg)", "MBox File (*.mbox)", "EML File Format (*.eml)", and "EMLx File Format (*.emlx)".
- Other Options:** A group box containing two radio button options: "Create New PST File" (selected) and "Use Existing PST File".
- Select Output Location:** A text input field that is currently empty, with a "Browse" button to its right. Below the input field is a horizontal separator line.

At the bottom center of the dialog is a "Convert Now" button with a small icon to its left.