

SysCurve EML Attachment Extractor - Working Guide

Introduction

SysCurve EML Attachment Extractor is designed to do one thing extremely well—scan your .EML files and pull out every attachment without altering the original emails. Whether you want attachments sorted in a structured folder layout or collected inside a single destination folder for quick review, this tool automates the entire process with minimal effort.

Key Features

- Extract attachments from EML files in a folder-wise structure
- Option to save all attachments into one consolidated folder
- Built-in email preview before extraction
- Runs smoothly on all modern Windows versions

System Requirements

- Operating System: Windows 7, 8, 8.1, 10, 11
- Processor: Intel or compatible processor
- RAM: 8 GB or higher recommended

- Hard Disk Space: Minimum 500 MB for installation plus extra space for saved attachments
- .NET Framework: Version 4.7.2 or later

Installation Steps

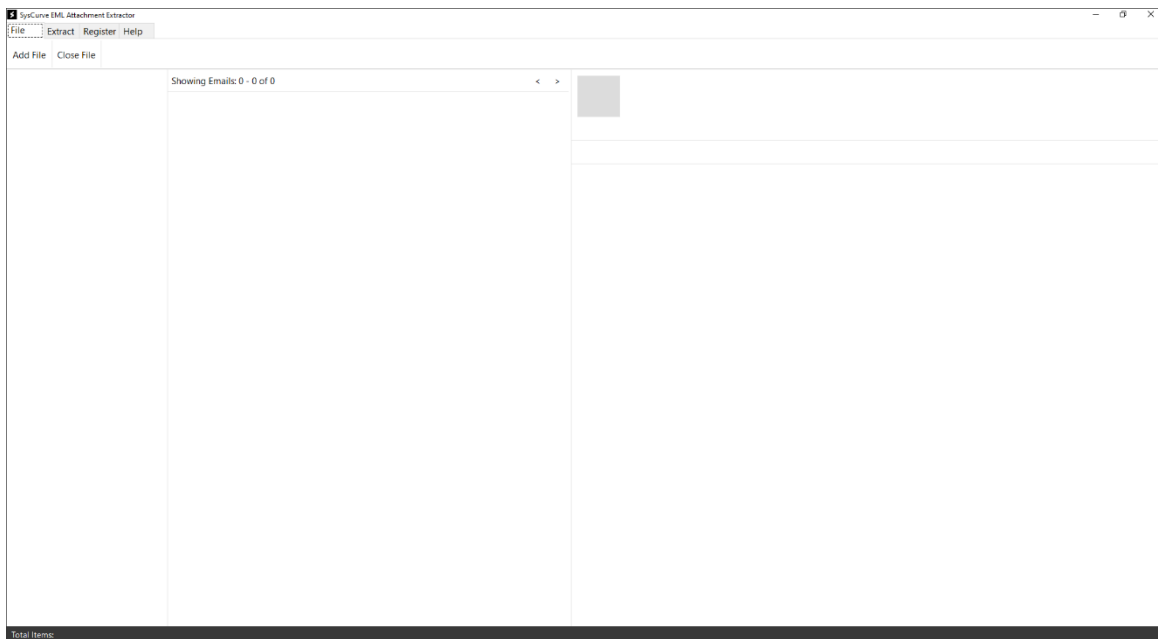
1. Go to the official SysCurve website and download SysCurve EML Attachment Extractor.
2. Run the downloaded setup file and follow the installation wizard.
3. After installation, start the program using the desktop icon or from the Start Menu.

How to Use

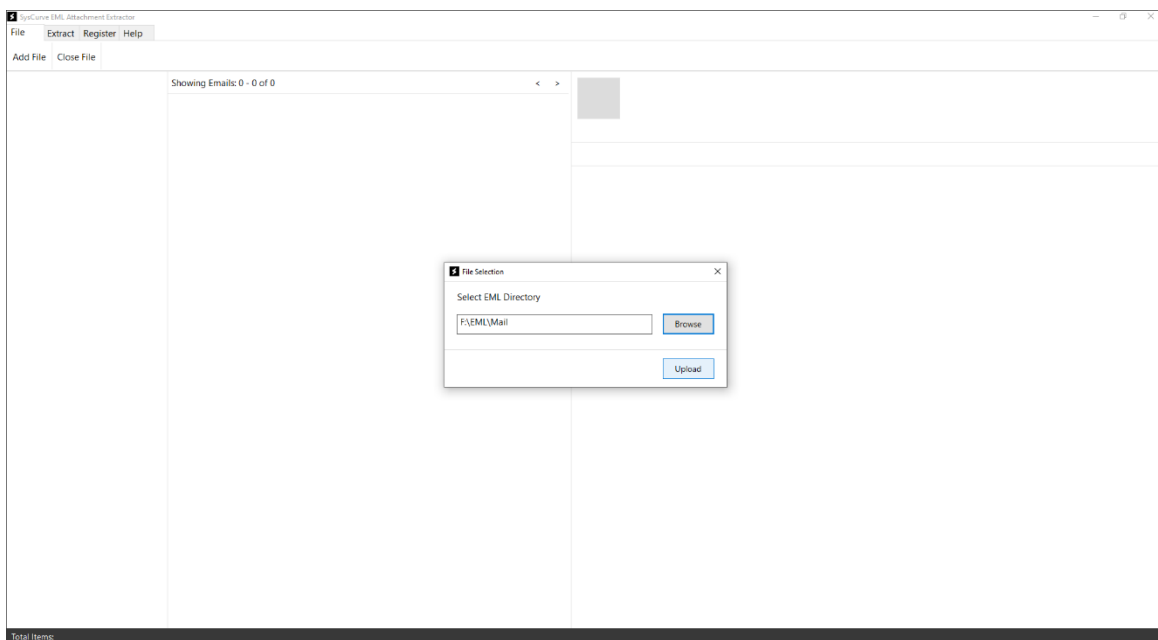
1. Launch the SysCurve EML Attachment Extractor application.



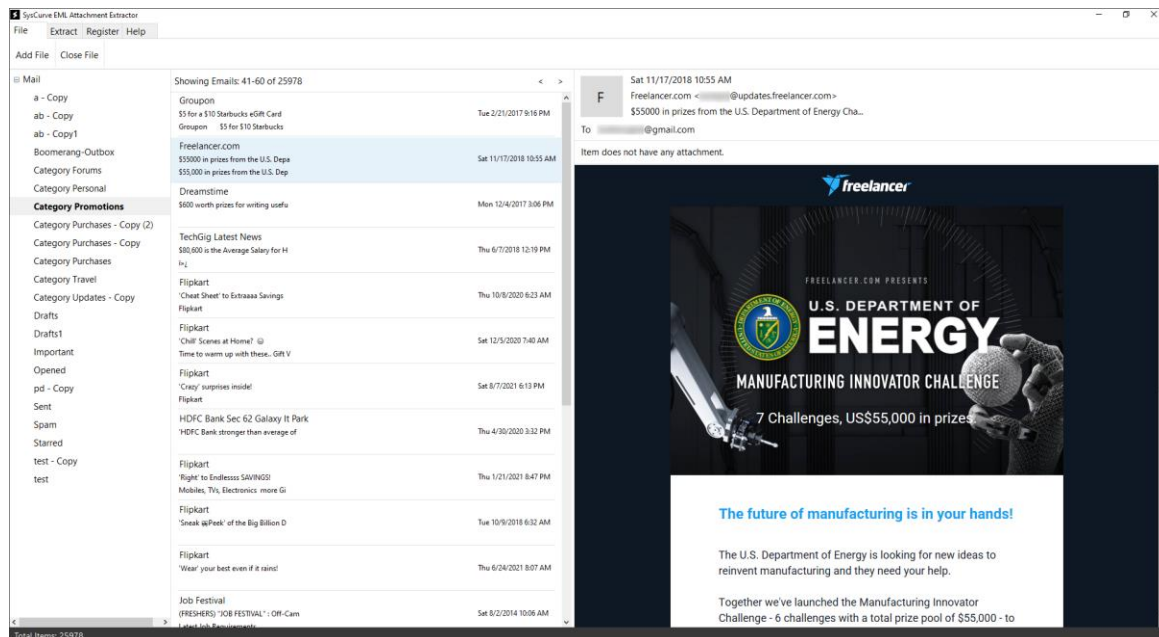
2. On the main screen, click Add File.



3. Browse and select the folder containing EML files, then click Upload.



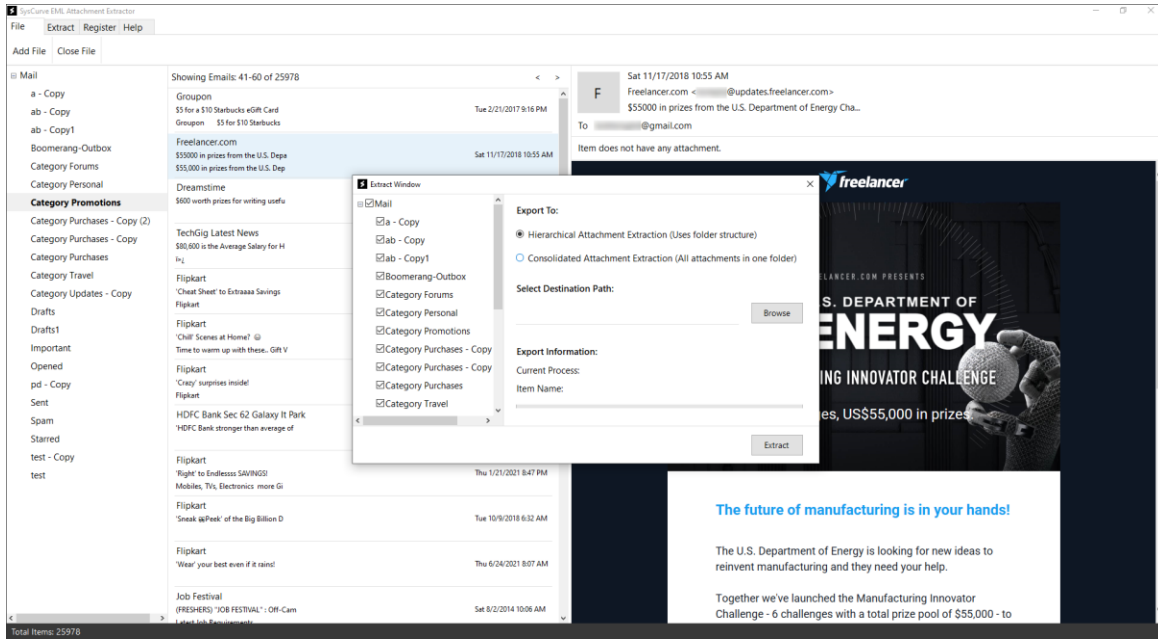
4. Optional: Select an email from the loaded list to preview its content and attachments.



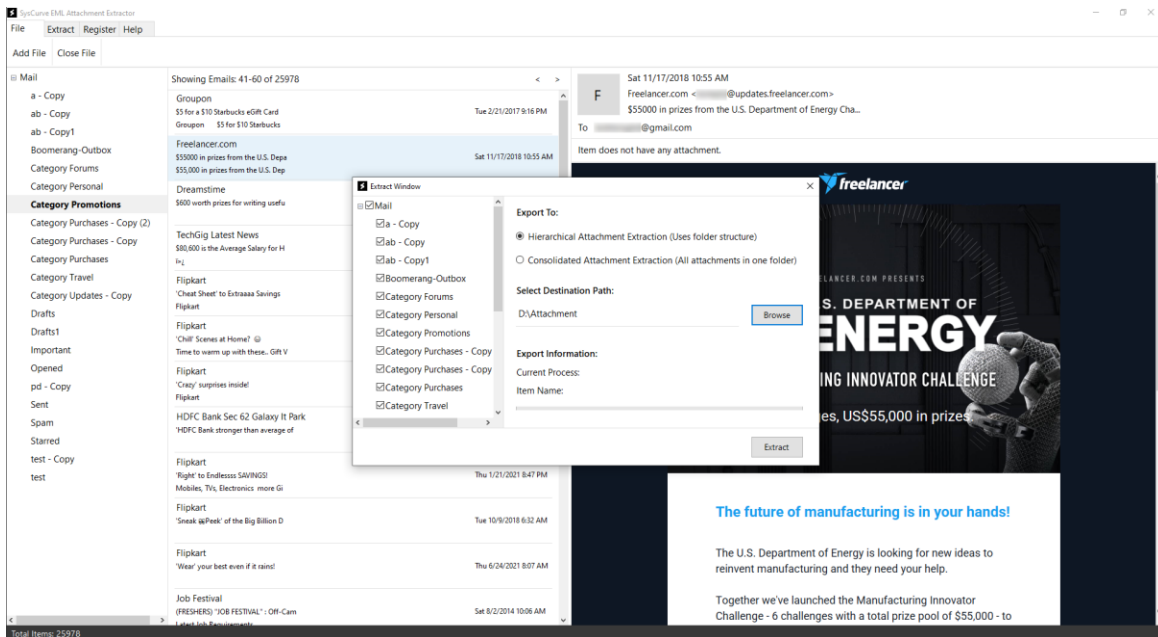
5. Click on Extract to begin the attachment export process.

6. Choose your preferred extraction mode, for example:

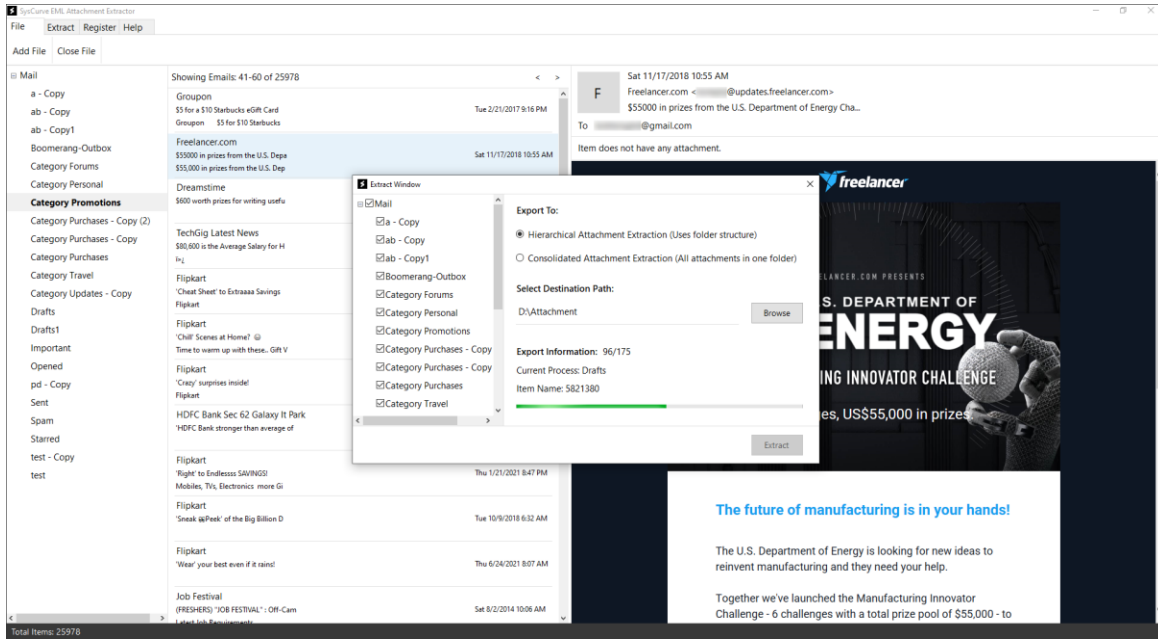
- 1) Hierarchical Extraction – Save attachments in folders matching the original email structure.
- 2) Consolidated Extraction – Save all attachments into a single target folder.



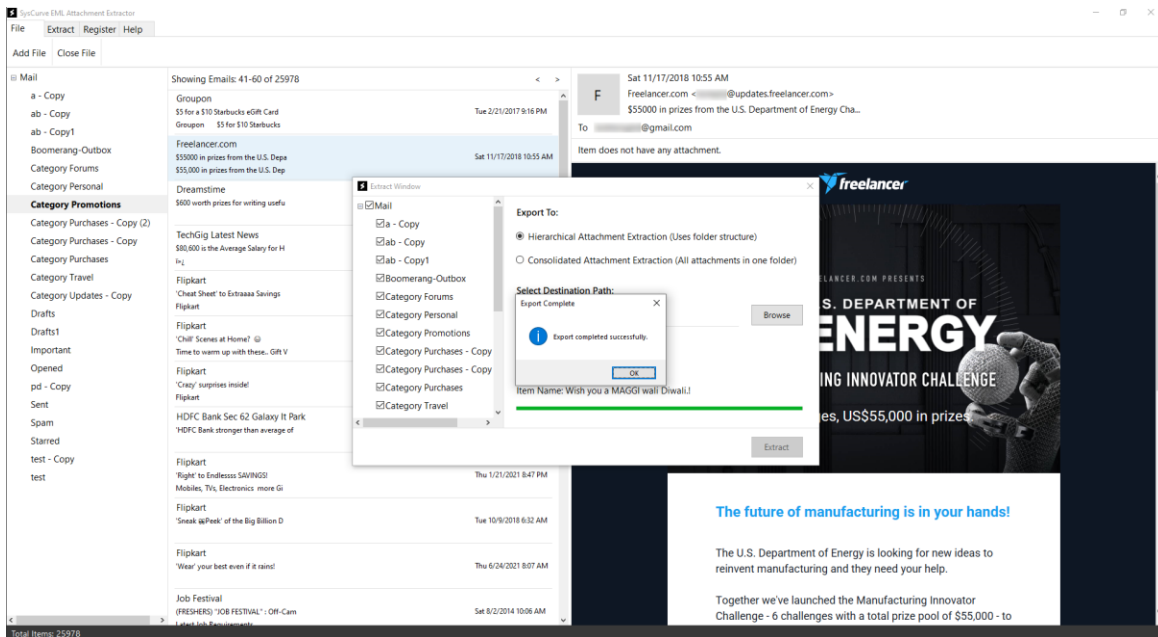
7. Set the destination path where you want to store the extracted attachments.



8. Confirm your settings and start the extraction.



9. Wait until the process finishes. A completion message will appear once all attachments are exported.



Note: For best results, ensure the SysCurve EML Attachment Extractor is closed before moving, renaming, or modifying the extracted attachments.

Support

If you need any help while using the software, you can reach out to our support team:

- Email: support@syscurve.com

- Website: <https://www.syscurve.com/eml-attachment-extractor-tool.html>

Our team is always ready to assist you and make sure your experience with SysCurve tools remains reliable and hassle-free.