

SysCurve EML Email Address Extractor - Working Guide

Introduction

SysCurve EML Email Address Extractor is a dedicated utility for collecting email addresses from .EML message files. It scans every loaded message, reads sender and recipient fields, and compiles a clean, ready-to-use list of email IDs. Whether you're organizing contacts, preparing a campaign, or cleaning old data, the tool automatically removes duplicates and exports the final list in your preferred format.

Key Features

- Export extracted email addresses to CSV, VCF, JSON, HTML, TXT, or XML.
- Built-in duplicate removal so each email address appears only once.
- Add and process multiple EML files or entire folders in a single run.
- Optional email preview to verify content before extraction.
- Source EML files remain unchanged; only addresses are read and exported.
- Fully compatible with all modern Windows versions.

System Requirements

- Operating System: Windows 7, 8, 8.1, 10, 11
- Processor: Intel or equivalent compatible CPU
- RAM: 8 GB or more recommended for smooth performance
- Hard Disk Space: Around 500 MB for installation, plus additional space for exported lists
- .NET Framework: Version 4.7.2 or higher

Installation Steps

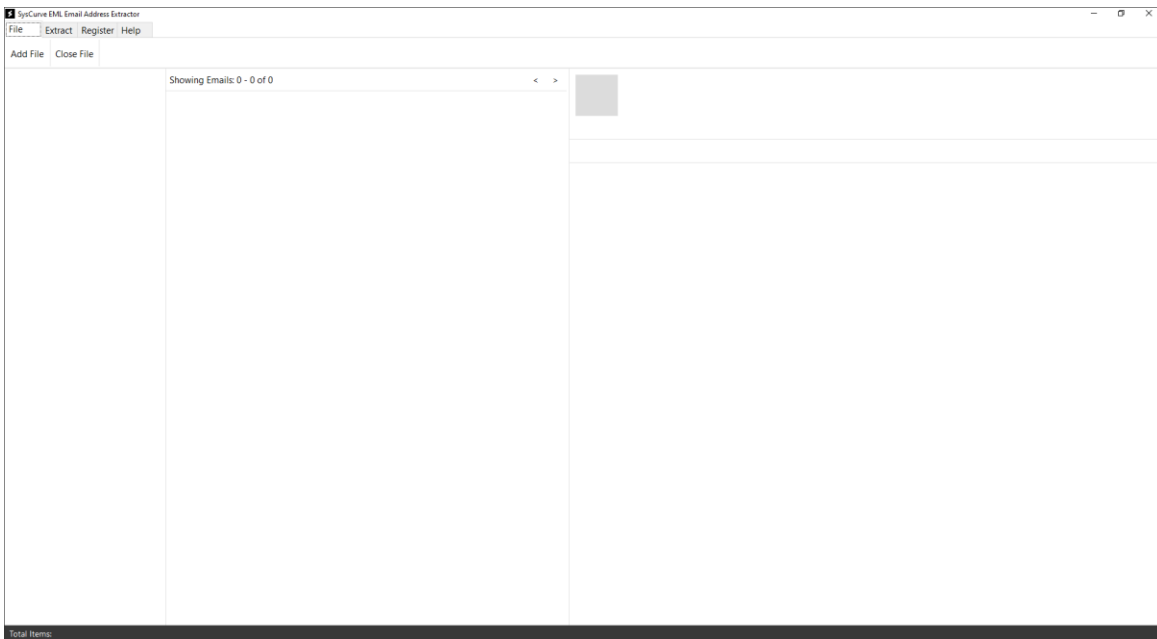
1. Download SysCurve EML Email Address Extractor from the official SysCurve website.
2. Run the downloaded setup file and follow the installation wizard.
3. After installation completes, launch the tool from the desktop shortcut or the Windows Start Menu.

How to Use

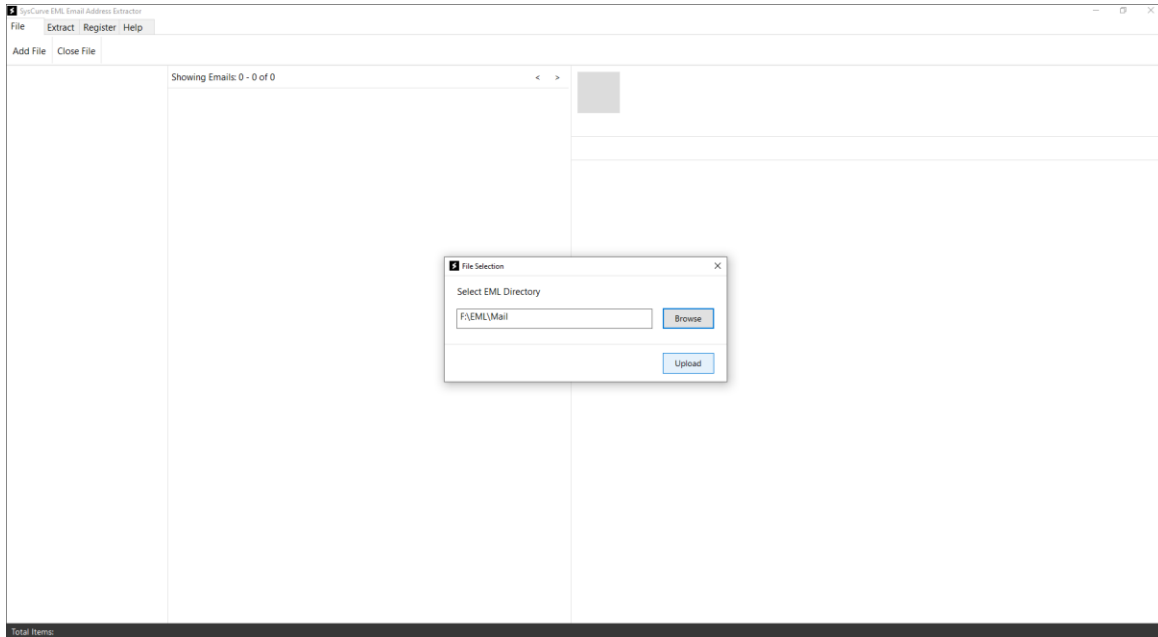
1. Open the SysCurve EML Email Address Extractor application.



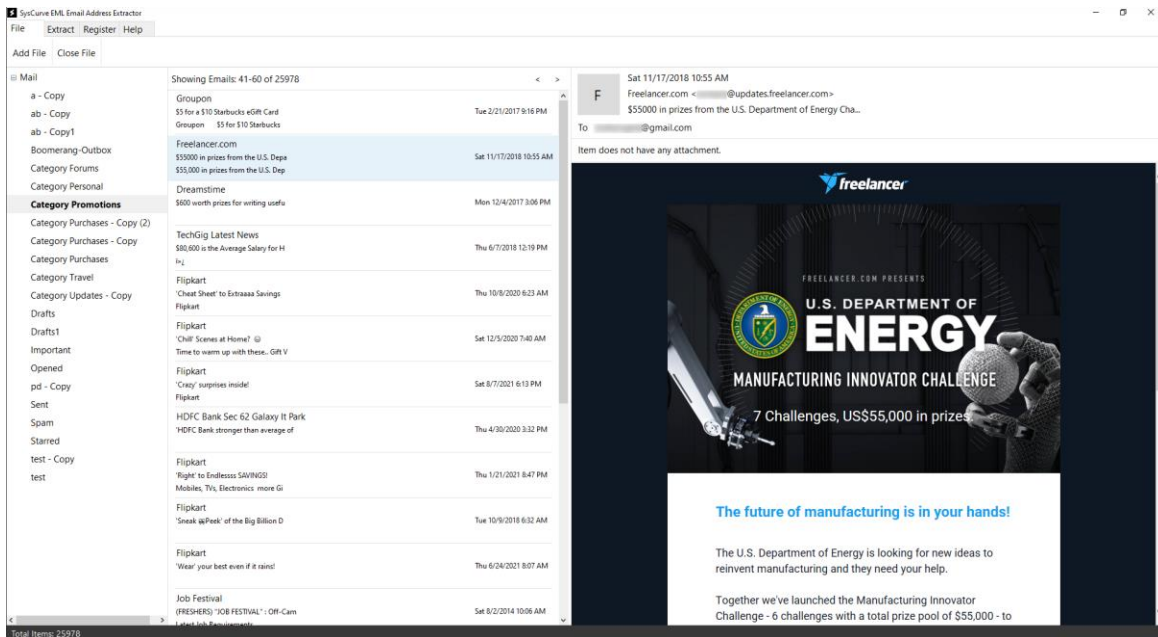
2. On the main window, click Add File.



3. Browse to the location of your EML folder, select it, and click Open / Upload.

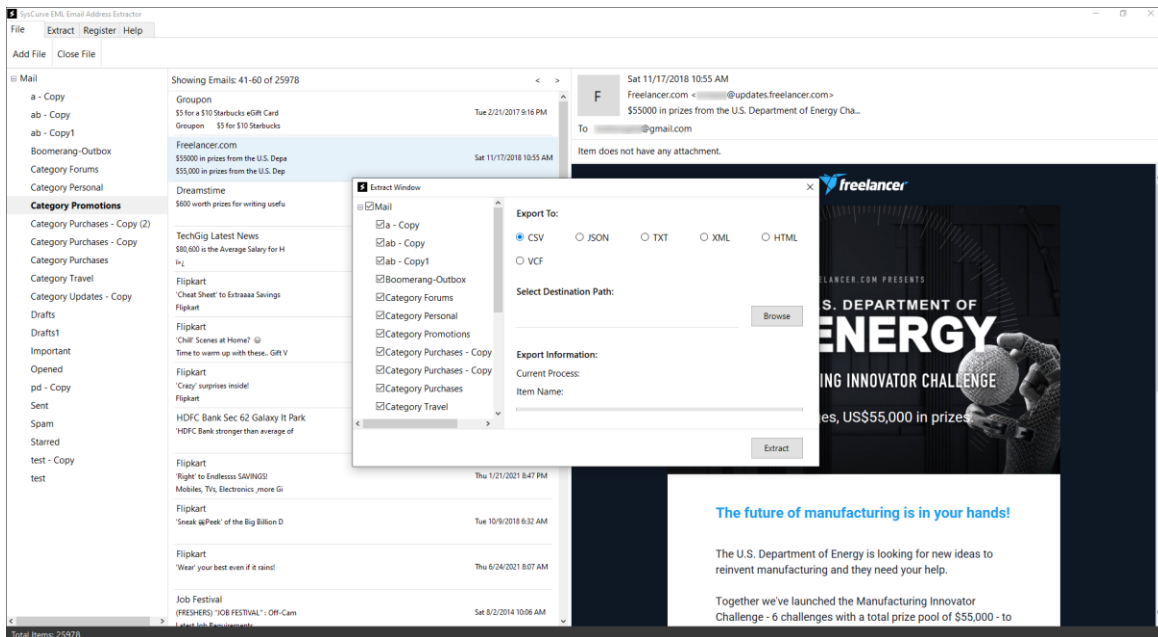


4. Optional: Select any loaded email to preview its content and confirm that the messages are correct.

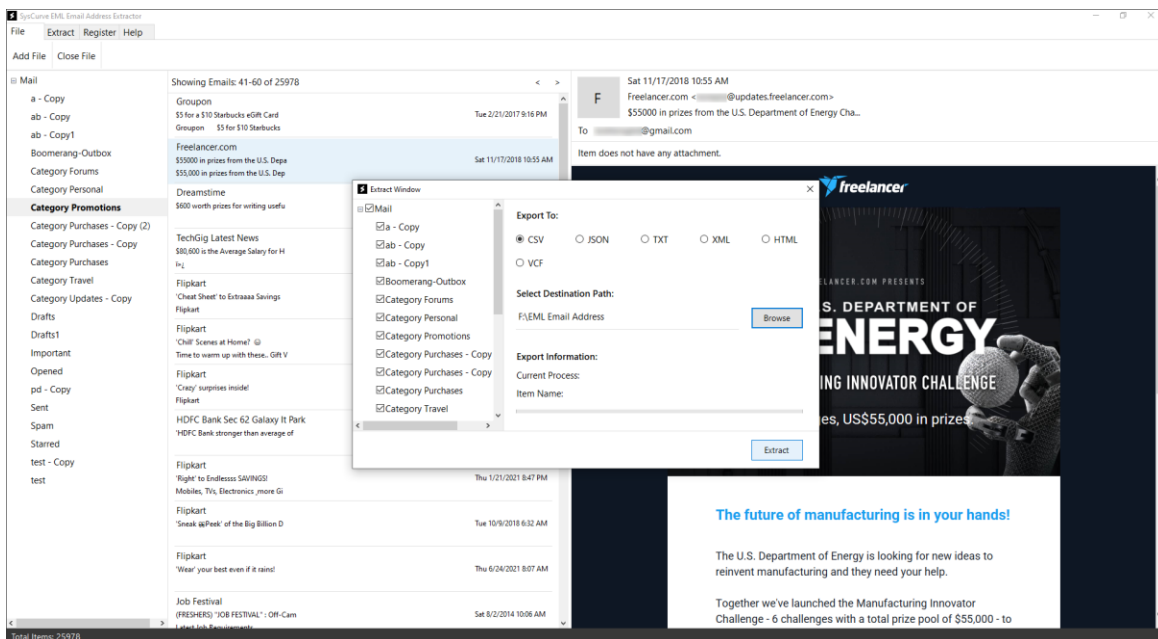


5. Click on Extract to configure and start the address collection process.

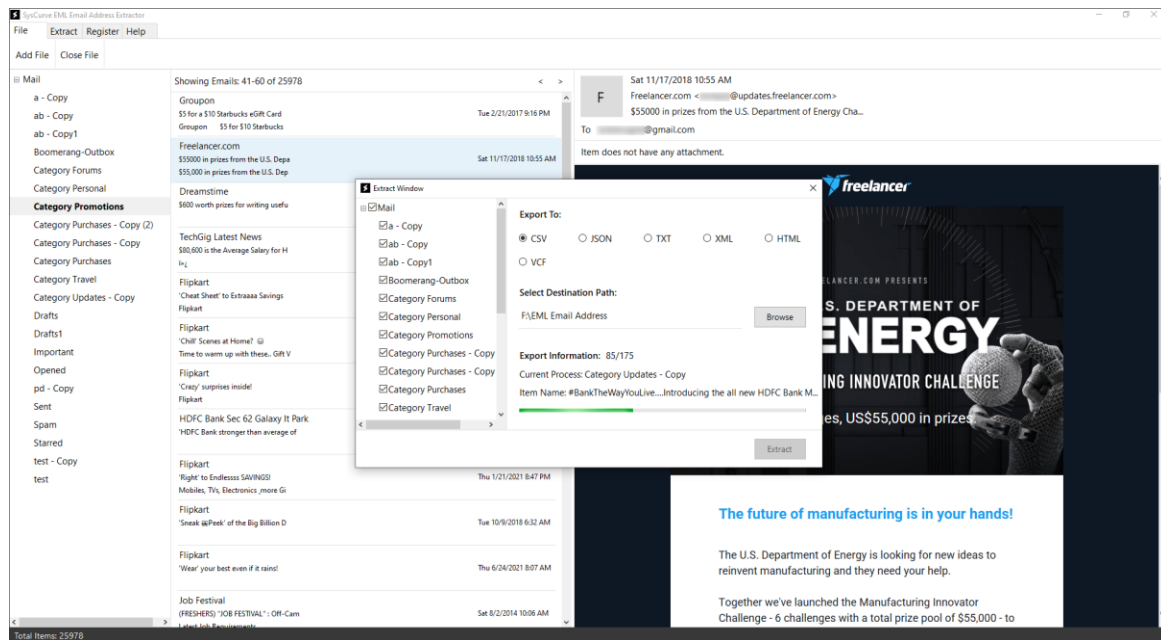
6. From the export options, choose the desired output format (for example, CSV if you plan to open the list in Excel or import it into another tool).



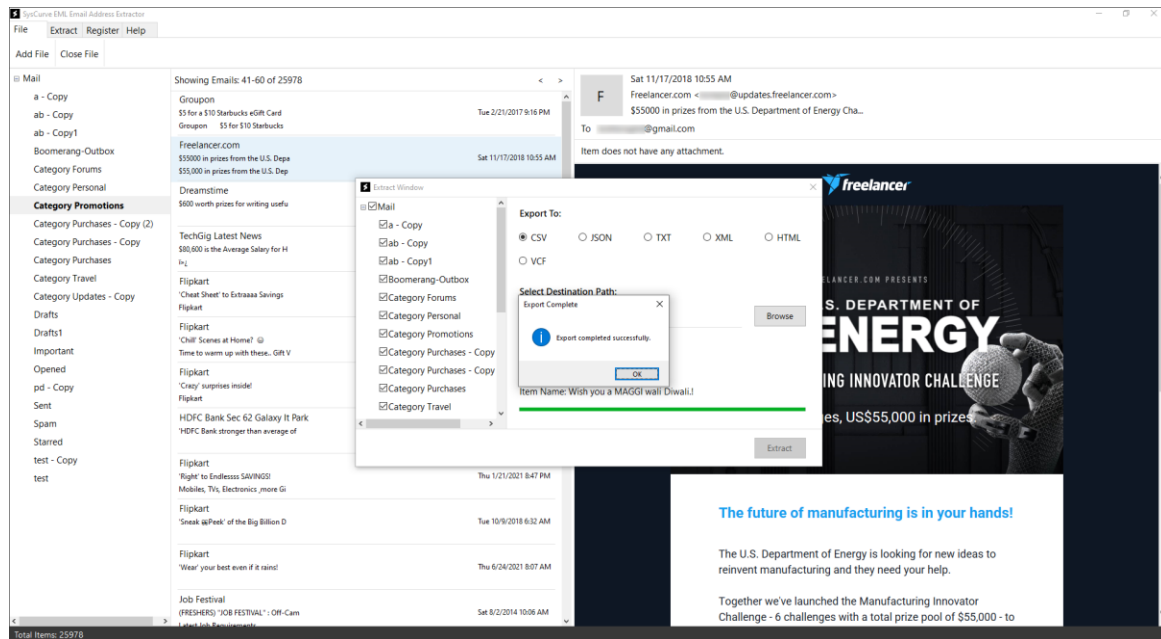
7. Click Browse to select the destination folder where the resulting file will be saved.



8. Click Export to begin extraction. The software will scan all messages, collect email addresses, remove duplicates, and generate the output file.



9. Wait until the progress bar reaches 100%. When the process finishes, a completion message will appear on the screen.



Note: For best results, close the SysCurve EML Email Address Extractor before opening, renaming, or moving the exported files in other applications.

Support

If you have any questions, issues, or need help using the software, you can contact our support team:

- Email: support@syscurve.com
- Website: <https://www.syscurve.com/eml-email-address-extractor-tool.html>

We are always available to assist you and ensure your experience with SysCurve tools is smooth, efficient, and hassle-free.