

SysCurve EML Viewer Tool - Working Guide

Introduction

SysCurve EML Viewer is a standalone utility that lets you open and inspect .eml message files without configuring any email client. You can quickly browse through folders of EML files, read complete messages with formatting, and then export your mail data in multiple formats. The tool supports bulk conversion of EML emails to MBOX, MSG, and HTML, while also allowing you to work on single messages for printing, PDF generation (via PDF printer), and header-level analysis. It's a practical solution for home users, IT teams, and investigators who need clear visibility and flexible export options for EML data.

Key Features

- View and navigate EML files from different sources (Outlook Express, Windows Live Mail, Thunderbird, mail backups, etc.).
- Batch convert EML emails to MBOX, MSG, or HTML formats.
- Print selected messages or send them to a PDF printer (such as "Microsoft Print to PDF") for electronic archiving.
- Per-message actions like copying or saving EML, and opening messages in a dedicated preview panel.

- Header analysis options to review both parsed headers (structured view) and raw headers (original, unformatted view).
- Attachment preview and save options directly from the message viewer.
- Simple, responsive interface designed for smooth scrolling and quick loading, even with large EML collections.
- Compatible with all common Windows desktop editions.

System Requirements

- Operating System: Windows 7, 8, 8.1, 10, 11
- Processor: Intel or equivalent compatible CPU
- RAM: 8 GB or more recommended, especially when working with very large sets of EML files
- Hard Disk Space: Approximately 500 MB for installation, plus additional free space for exports and temporary files
- .NET Framework: Version 4.7.2 or later

Installation Steps

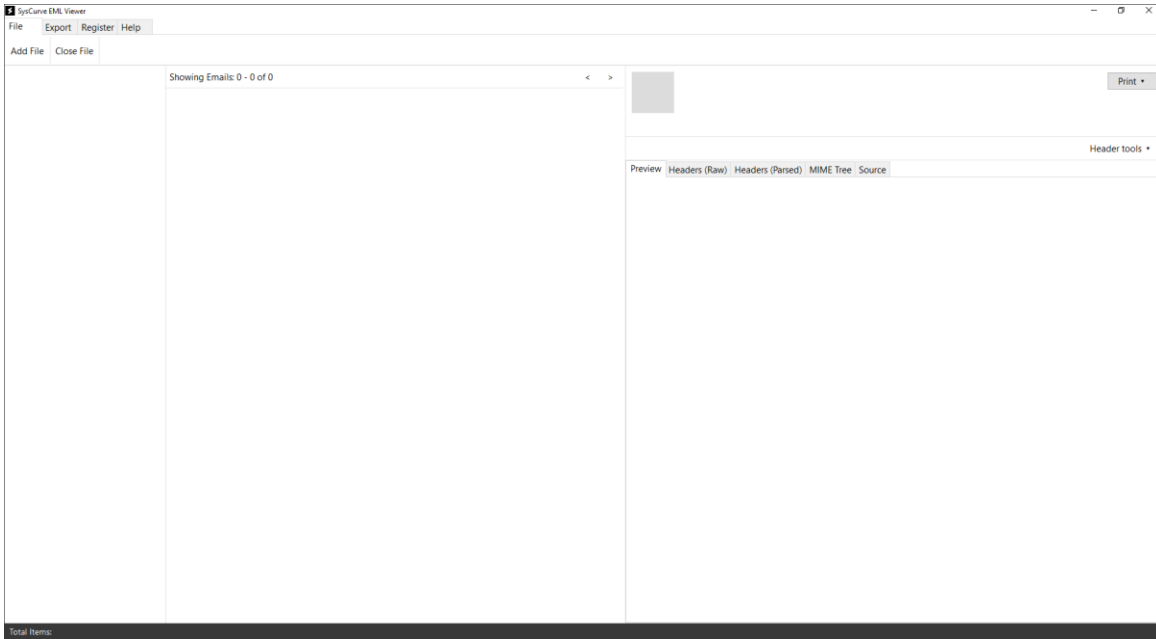
1. Download SysCurve EML Viewer from the official website.
2. Run the installer (.exe) and follow the instructions shown in the setup wizard.
3. When the installation is complete, launch SysCurve EML Viewer using the desktop shortcut or from the Windows Start Menu.

How to Use

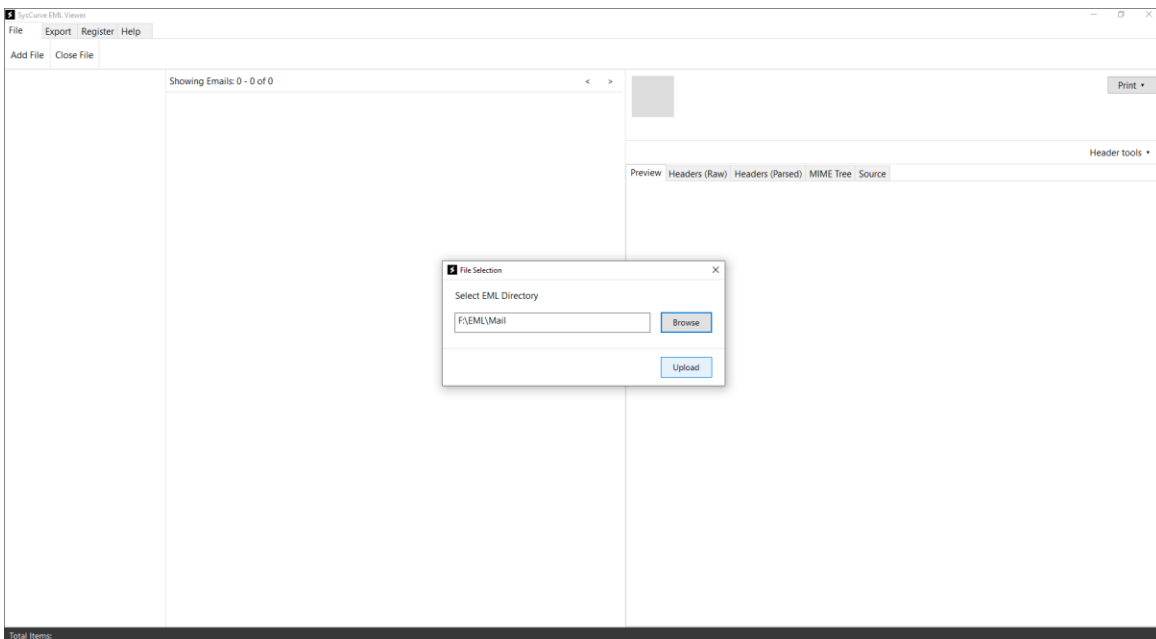
1. Open SysCurve EML Viewer from the desktop icon or Start Menu.



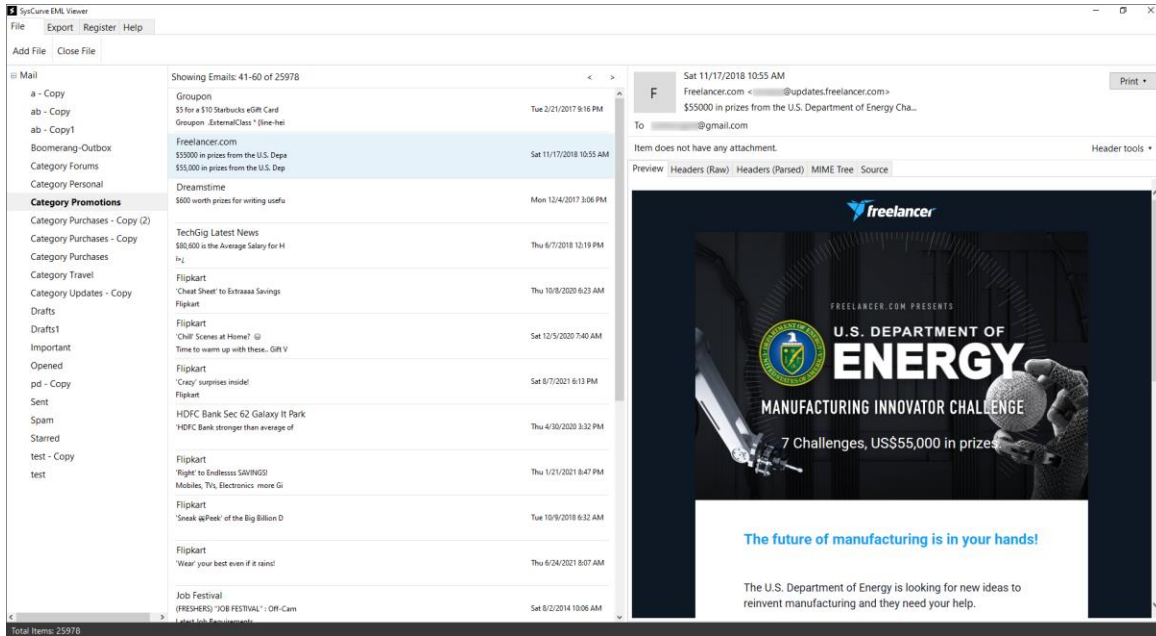
2. On the main window, click Add File.



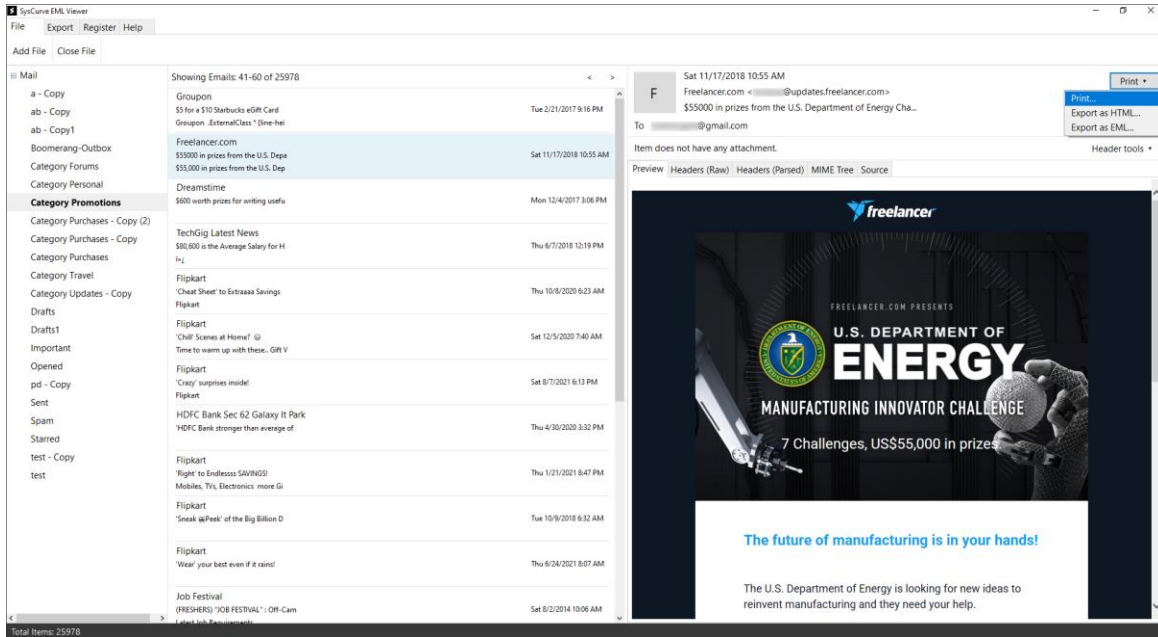
3. Navigate to the folder that contains your .eml files, choose an EML folder, and then click Upload.



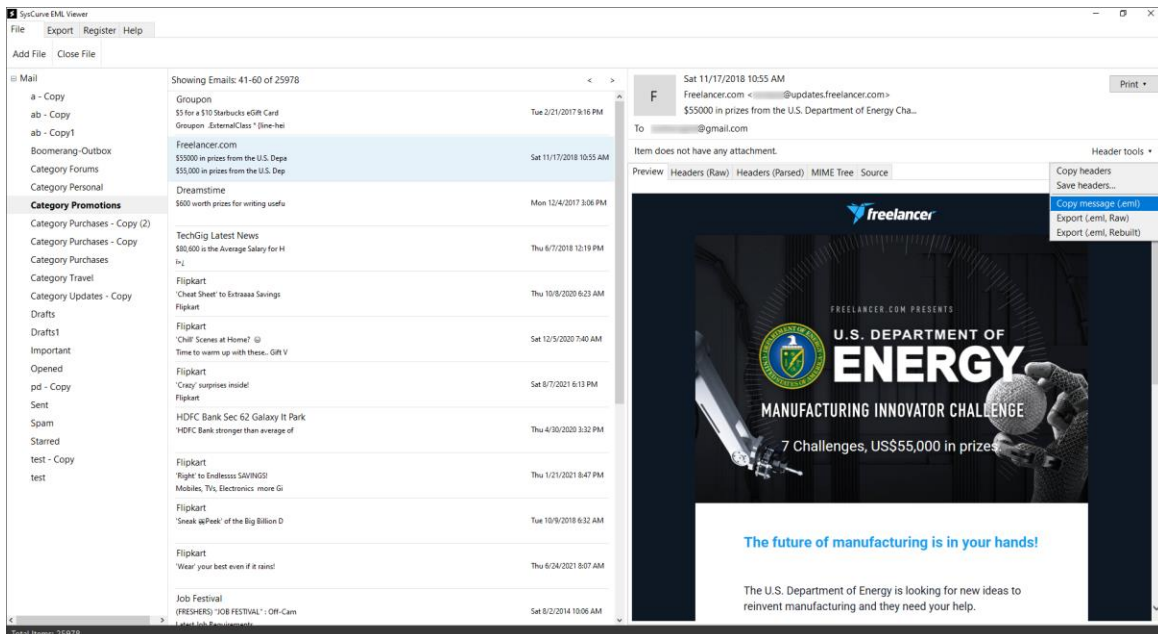
- Optional: Select a folder to load its emails, choose a message to open it in the preview area, and scroll to read the entire email with all formatting and inline images.



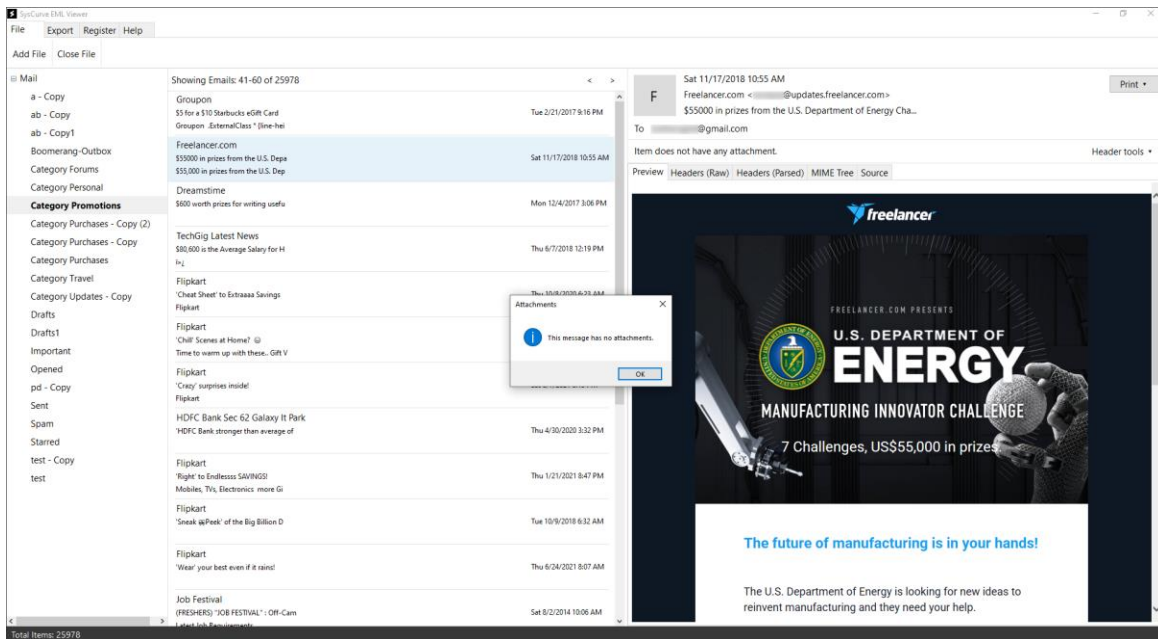
- Select the email you want to print, click Print from the toolbar or right-click menu, choose a physical printer or a PDF printer (such as Microsoft Print to PDF), adjust the settings if required, and click Print to complete the job.



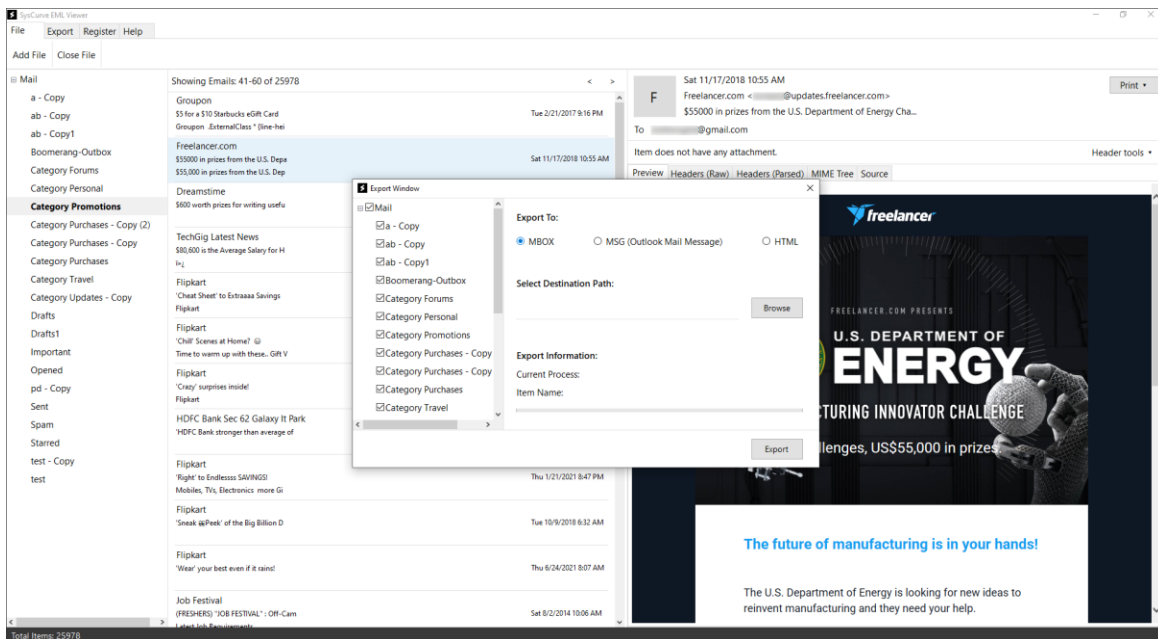
6. Use the available message actions to manage EML and headers as needed—for any selected email(s), you can Copy Headers, Save Headers, Copy Message (.eml), or Export (to .eml or Raw) directly from the toolbar or right-click menu.



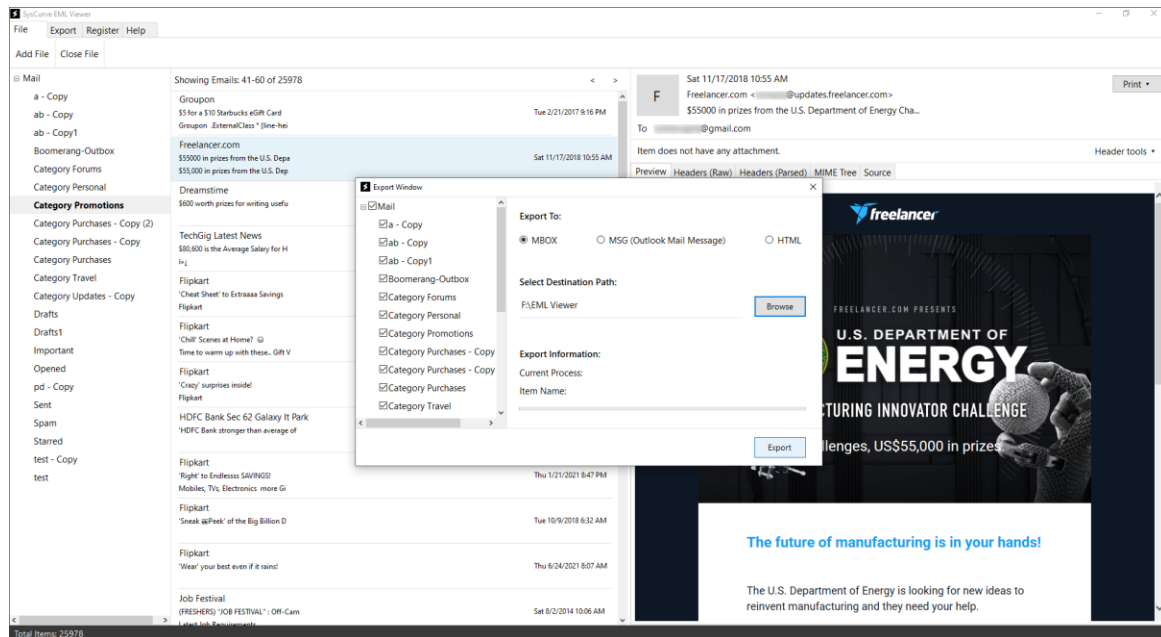
7. Click an attachment to view it, then choose the available option to save or download it to your computer.



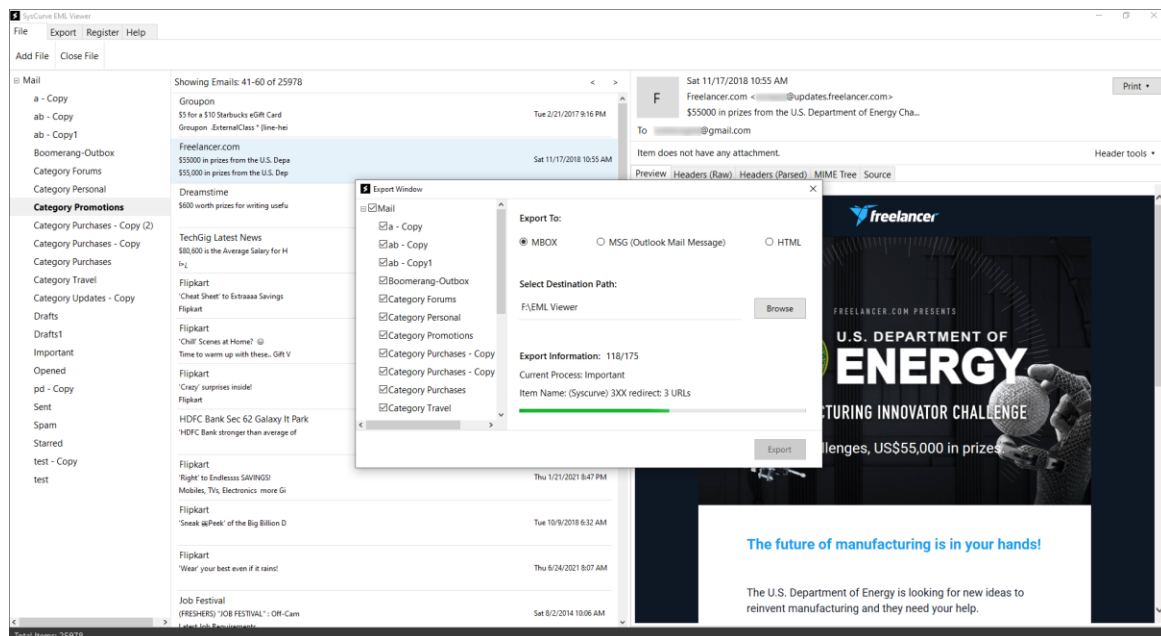
8. In the export options, choose the output format you want, such as MBOX, MSG, or HTML.



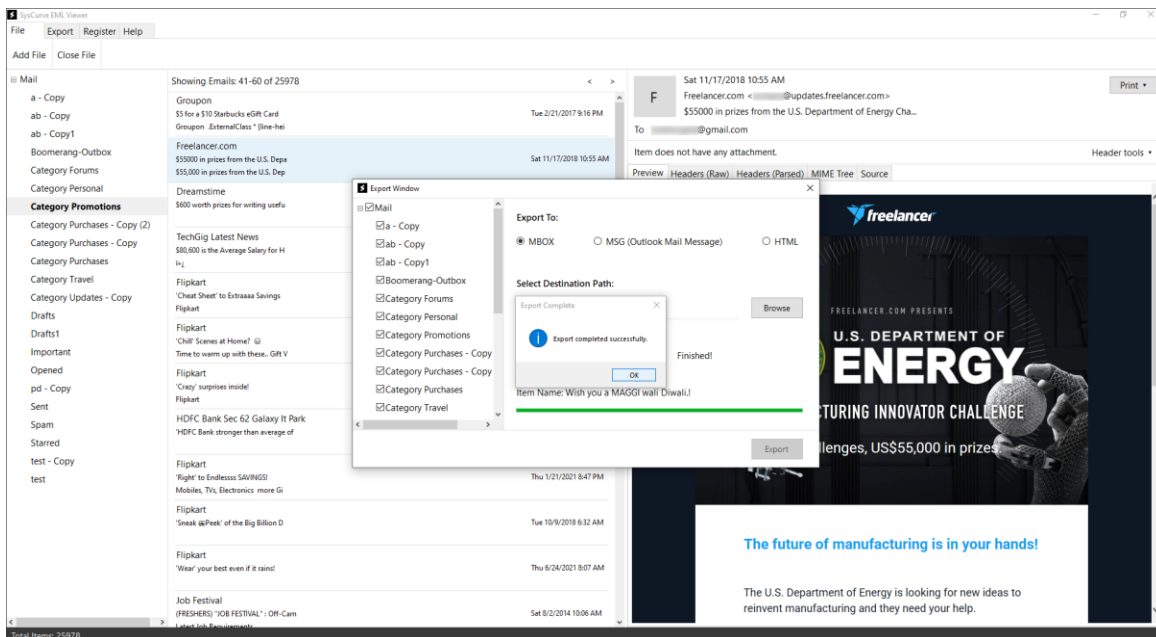
9. Click Browse and select the folder where you'd like to save the exported file.



10. Click Export to start the operation; the tool will process each EML file and convert the emails into the format you selected.



11. Wait until the progress bar hits 100%; once the conversion is complete, a confirmation message will be displayed on the screen.



Note: For smoother handling of exported data, it is recommended to close SysCurve EML Viewer before renaming, moving, or opening the converted files in other applications.

Support

If you need assistance, encounter any errors, or want clarification about specific features, you can reach the SysCurve support team:

- Email: support@syscurve.com

- Website: <https://www.syscurve.com/eml-viewer-tool.html>

Our team can help you with installation, basic usage, feature-related queries, and general troubleshooting for SysCurve EML Viewer.