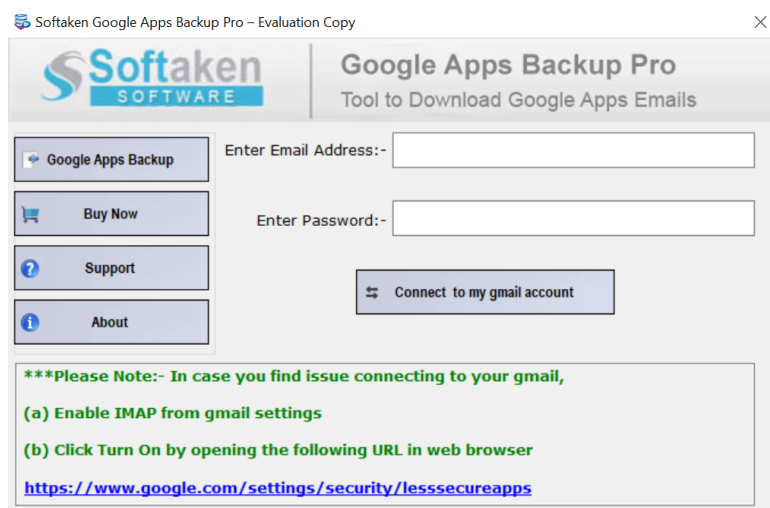


Steps to Backup G Suite emails to PST

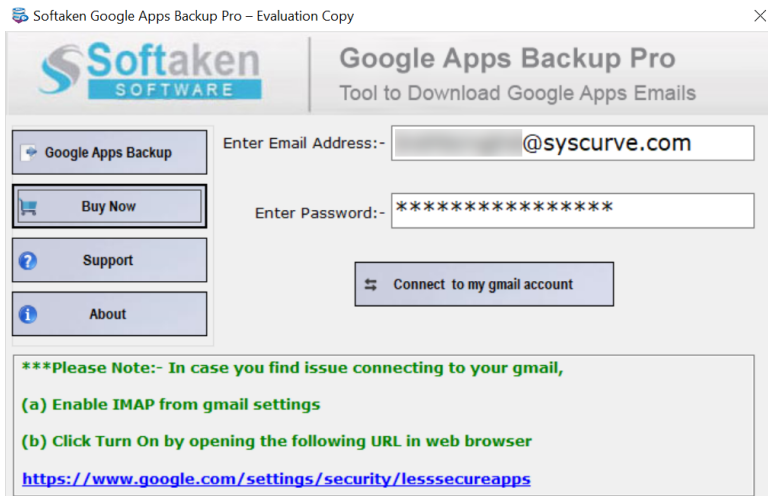
Step 1. Launch the SysCurve G Suite Backup tool. Enter Your G Suite Email ID and 16-character G Suite App password. This password is different than your regular one.



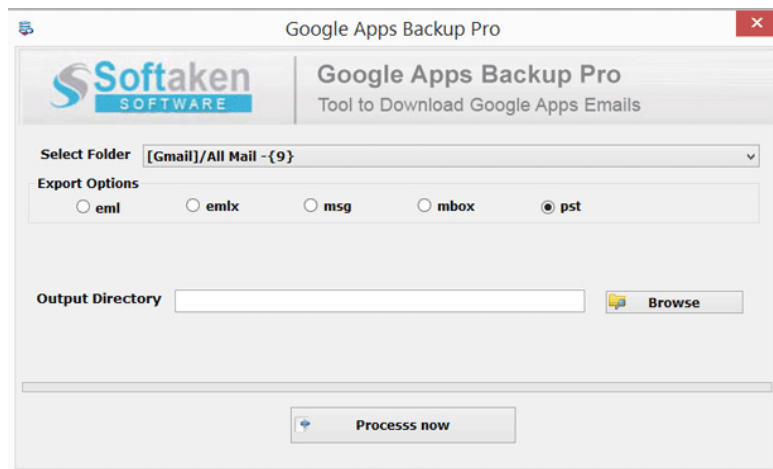
Step 2. Generate G Suite App Password

- Sign in to your Gmail account and visit <https://myaccount.google.com/>
- Click on the Security option and enable 2-step verification
- After enabling 2-step verification, click on the Security option and select the App Password
- Log in to your Gmail account and select the Other (custom name) as an app option
- Enter SysCurve G Suite Backup Tool and click on the Generate button

Step 3. Copy the 16-character G Suite App Password, paste it into the G Suite Mail Backup Tool and click on the Connect to my Gmail account button.



Step 4. Select the folders you want to export and choose PST as an Export option



Step 5. Click on the Browse button, provide a path to save the PST file, and click on the Process Now button

