

# SysCurve MBOX Splitter Tool - Working Guide

---

## Introduction

SysCurve MBOX Splitter is a specialized utility designed to break large .mbox files into smaller, more manageable parts without altering the original data. It scans your mailbox, applies the split rules you define, and generates multiple MBOX files based on size, message count, sender (From), or date range. With flexible date-based options—daily, monthly, quarterly, and yearly—the tool is ideal for organizing archives, improving performance, and simplifying backup or migration tasks for both personal and professional users.

## Key Features

- Split large MBOX files into smaller MBOX files by file size (e.g., 500 MB, 1 GB, etc.).
- Divide mailboxes based on number of messages per file (for example, every 1,000 emails).
- Create separate MBOX files by sender (From) to group emails by specific users or domains.
- Split using date range rules, including Daily, Monthly, Quarterly, and Yearly segmentation.
- Process single or multiple MBOX files in one session.

- Source MBOX files remain unchanged; the tool creates new split copies only.
- Designed to work smoothly on all modern Windows platforms.

## System Requirements

- Operating System: Windows 7, 8, 8.1, 10, 11
- Processor: Intel or equivalent compatible CPU
- RAM: 8 GB or more recommended, especially when working with very large MBOX mailboxes
- Hard Disk Space: Around 500 MB for installation plus adequate free space for the generated split files
- .NET Framework: Version 4.7.2 or higher

## Installation Steps

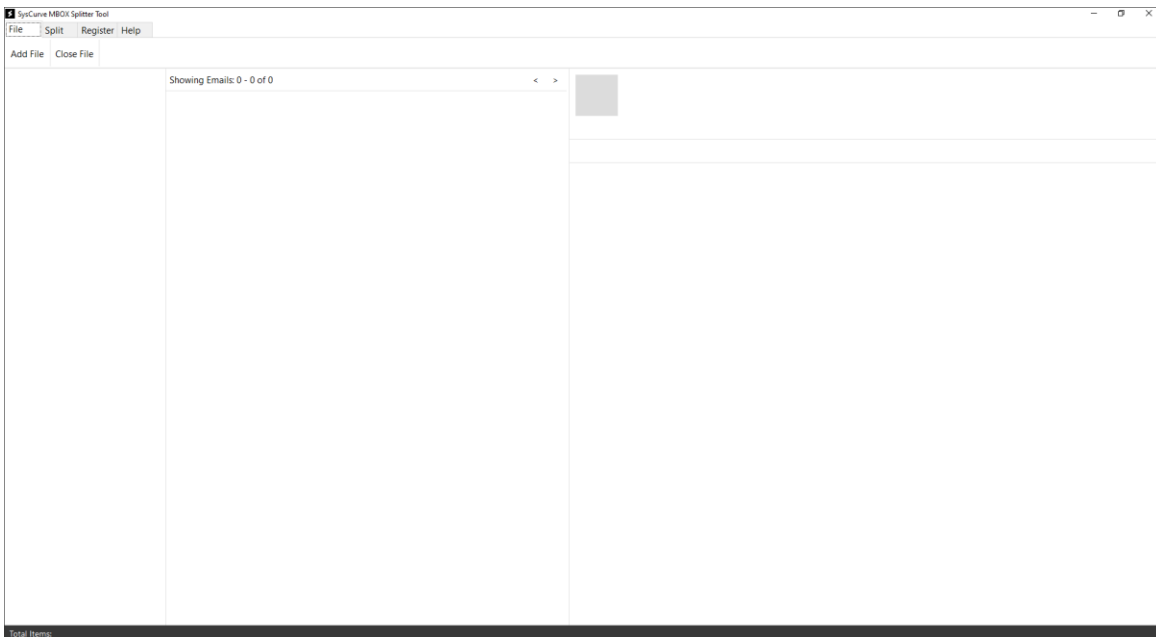
1. Download SysCurve MBOX Splitter from the official SysCurve website.
2. Run the downloaded setup file and follow the instructions provided by the installation wizard.
3. Once installation is complete, launch the tool from the desktop shortcut or the Windows Start Menu.

## How to Use

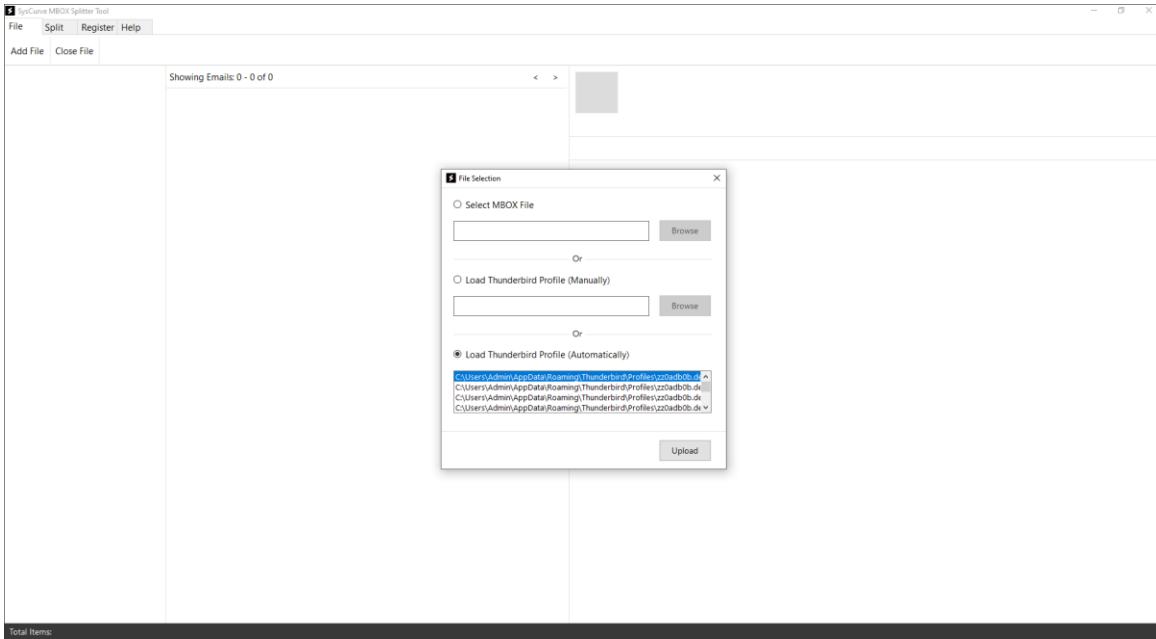
1. Open the SysCurve MBOX Splitter application.



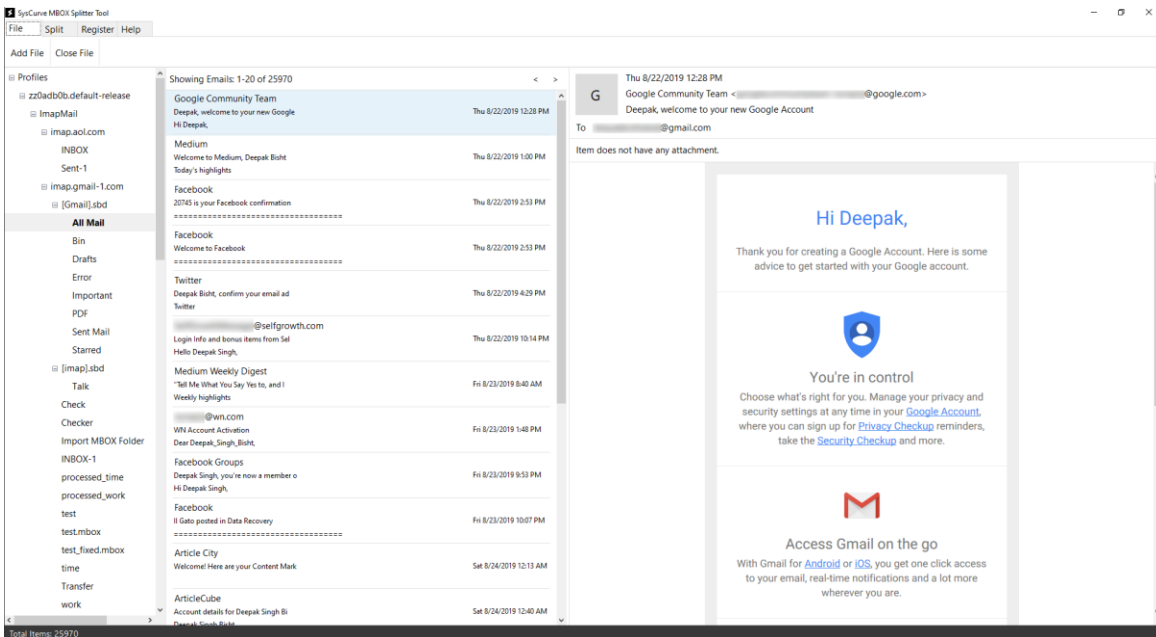
2. On the main window, click Add File to load your source MBOX file (or files).



3. Browse to the folder where your .mbox file is stored, select it, and click Upload.



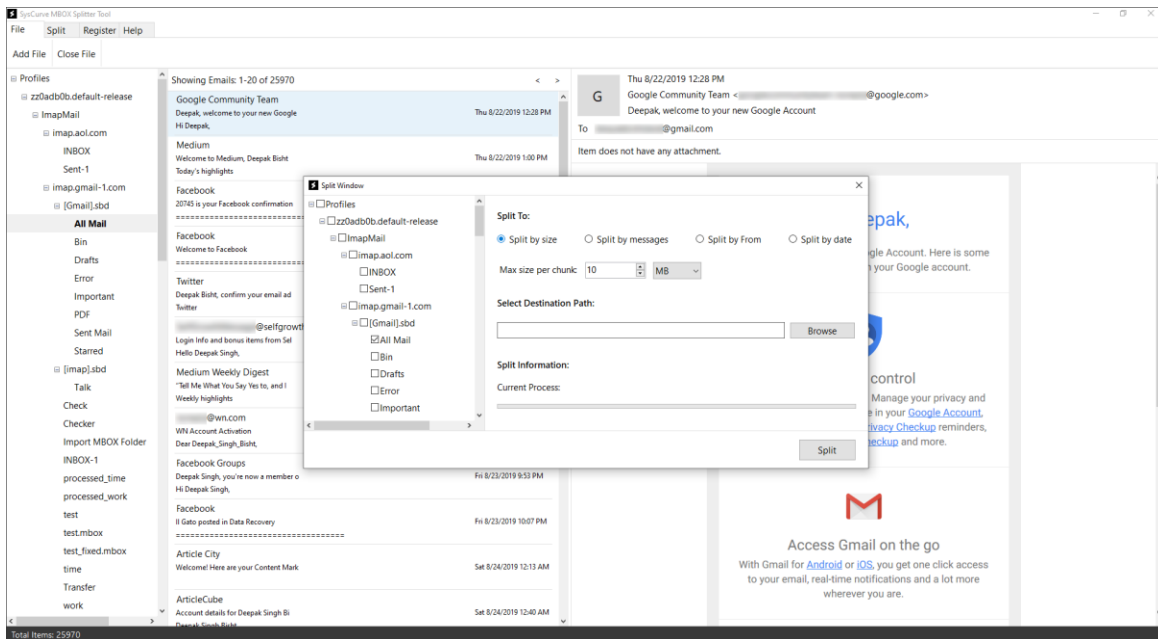
4. Optional: Click any listed email to preview its content and attachments before starting the splitting process.



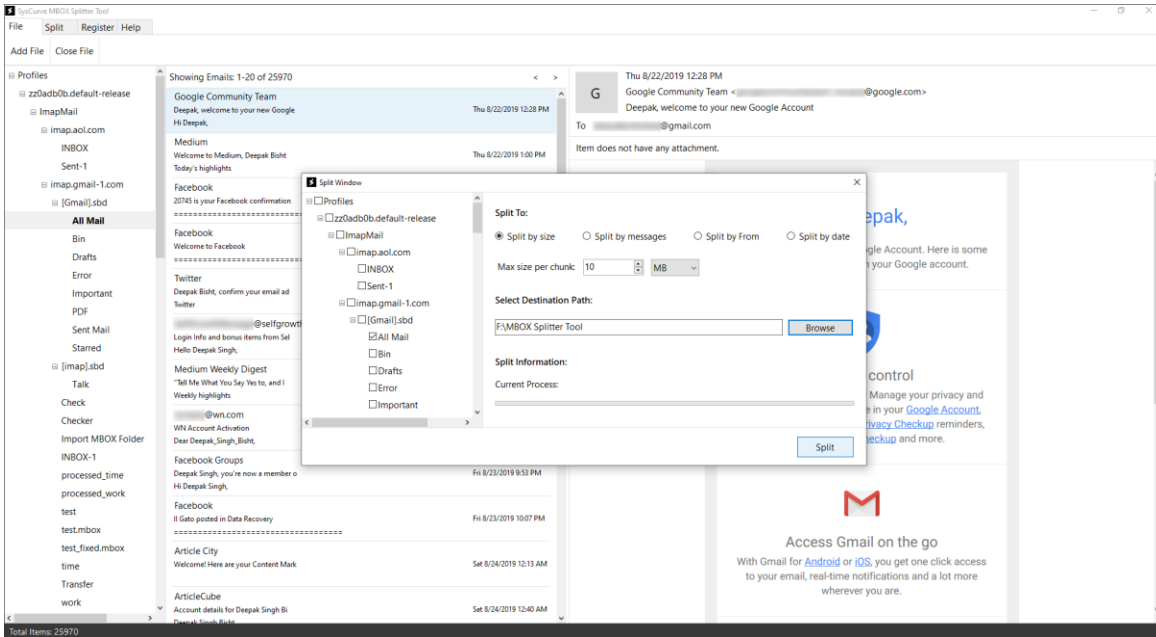
5. Click on Split option to begin the split process.

6. Select the desired splitting mode, for example:

- 1) Split by Size – Define a size limit for each output file (for example, 500 MB).
- 2) Split by Message Count – Specify how many emails each split file should contain.
- 3) Split by From (Sender) – Generate separate MBOX files grouped by sender address.
- 4) Split by Date Range – Use Daily, Monthly, Quarterly, or Yearly intervals to create time-based MBOX segments.

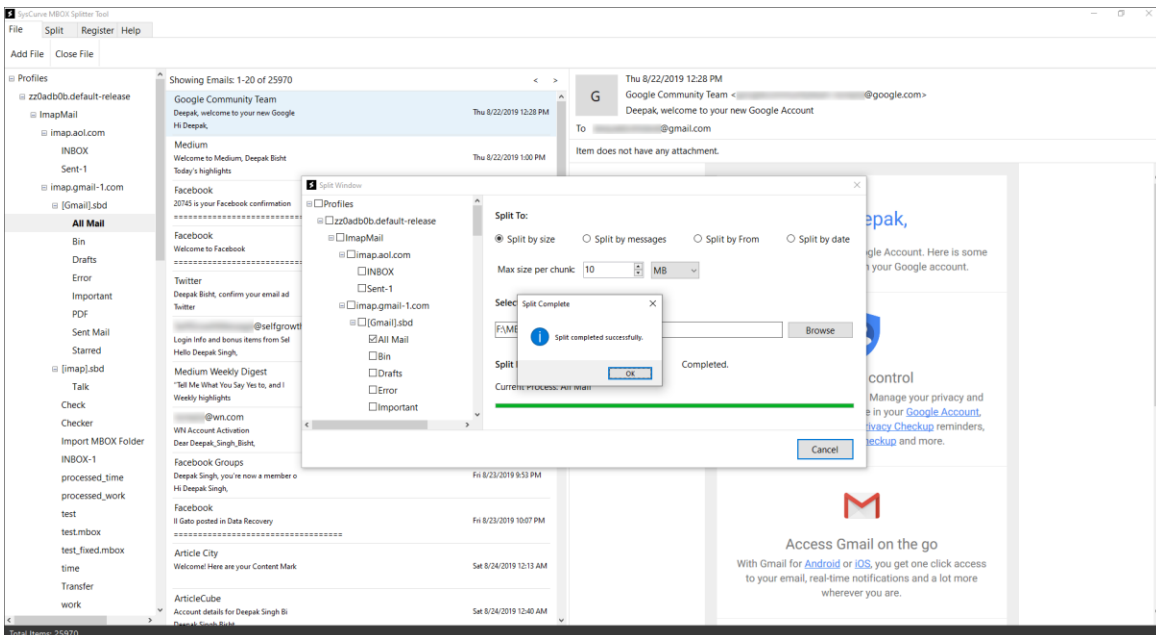


7. Click Browse and select the destination folder where the split MBOX files should be saved.



8. Review your settings and click Split to begin the process. The software will scan the source MBOX and create new files according to the selected rules.

9. Wait until the progress bar reaches 100%. Once the splitting operation is finished, a completion message will appear confirming that the new MBOX files have been generated.



Note: For best results, avoid renaming, moving, or opening the newly created MBOX files in other applications until the SysCurve MBOX Splitter process has fully completed and the application is closed.

## Support

If you have any questions, encounter issues, or need assistance with specific options in the tool, our support team is ready to help:

- Email: [support@syscurve.com](mailto:support@syscurve.com)

- Website: <https://www.syscurve.com/mbox-splitter-tool.html>

We are committed to ensuring your experience with SysCurve MBOX Splitter is smooth, efficient, and hassle-free.