

SysCurve MBOX Viewer Tool - Working Guide

Introduction

SysCurve MBOX Viewer is built to help you quickly open, read, and investigate emails stored in .mbox files without installing any email client. You can export entire mailboxes or large batches of messages to EML, MSG, and HTML in one go, while still having the flexibility to select individual emails to print, save as PDF, or inspect in detail using options like View Parsed Header and View Raw Header. This makes it an excellent choice for everyday users, IT teams, and forensic analysts who need both high-volume export and message-level analysis of MBOX data.

Key Features

- Open and browse MBOX files from clients like Thunderbird, Apple Mail, and others.
- Convert MBOX emails to EML, MSG, or HTML formats.
- Print selected emails or print to PDF for archiving and sharing.
- Quick actions like Copy EML and Save EML for selected messages.
- Advanced header inspection with options such as View Header (Parsed) and View Raw Header.

- Clean, easy-to-use interface focused on fast loading and smooth navigation.
- Works across all modern versions of Windows.

System Requirements

- Operating System: Windows 7, 8, 8.1, 10, 11
- Processor: Intel or equivalent compatible processor
- RAM: 8 GB or more recommended for better performance, especially with large MBOX files
- Hard Disk Space: Around 500 MB for installation, plus additional space for temporary and exported files
- .NET Framework: Version 4.7.2 or later

Installation Steps

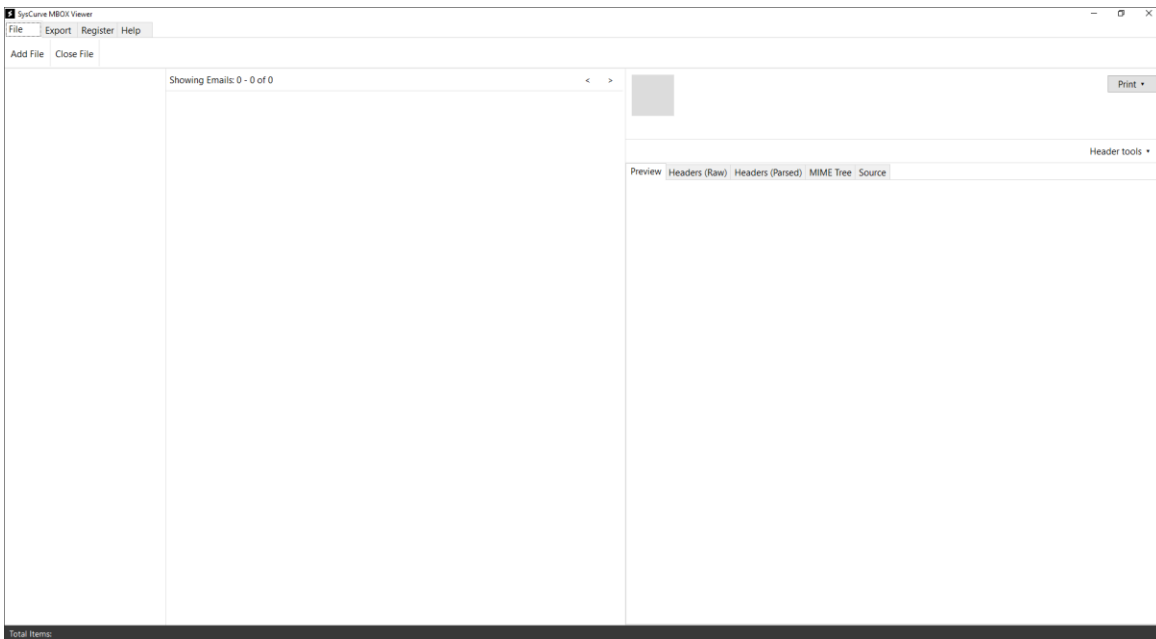
1. Download SysCurve MBOX Viewer from the official SysCurve website.
2. Run the downloaded setup file and follow the on-screen prompts in the installation wizard.
3. Once installation completes, open the program using the desktop shortcut or from the Windows Start Menu.

How to Use

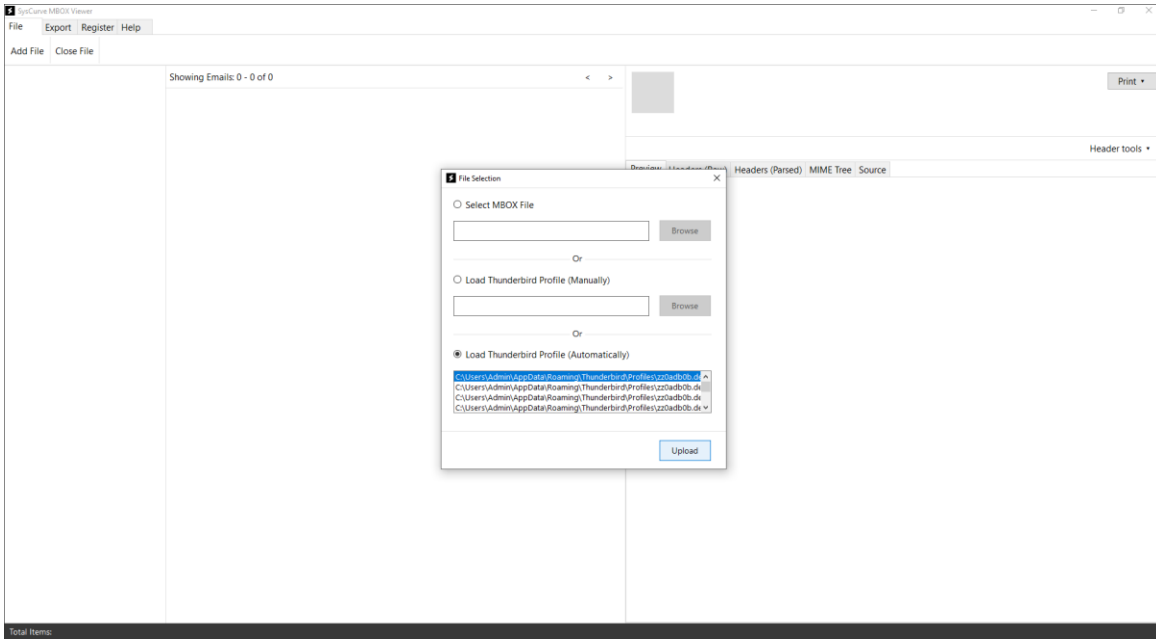
1. Start SysCurve MBOX Viewer from the desktop icon or Start Menu.



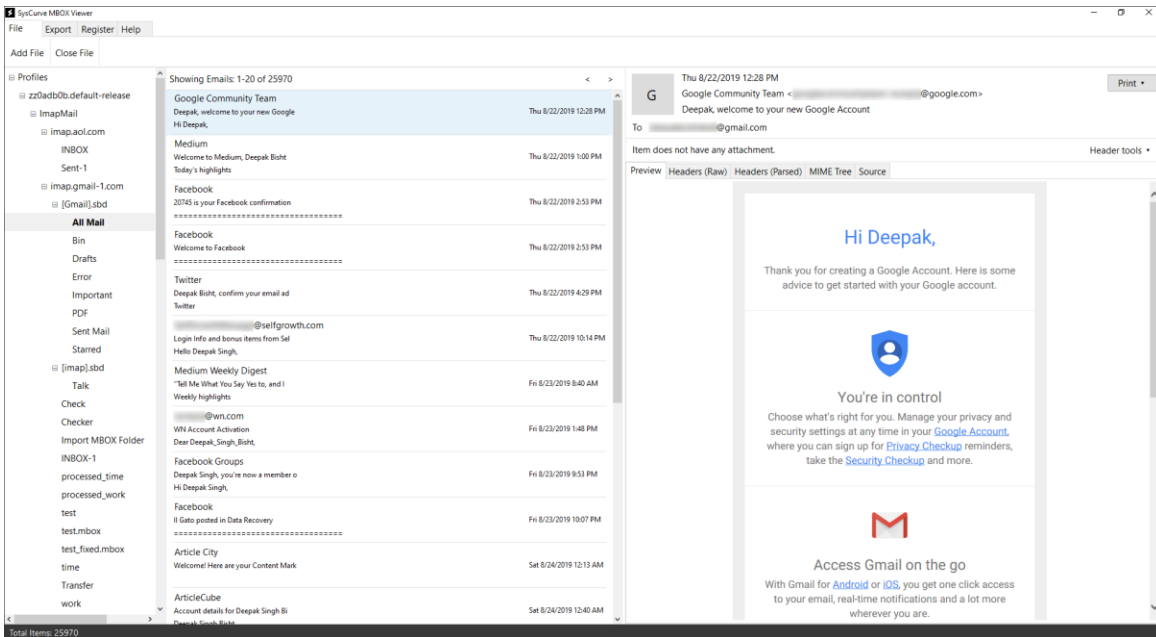
2. On the main interface, click Add File.



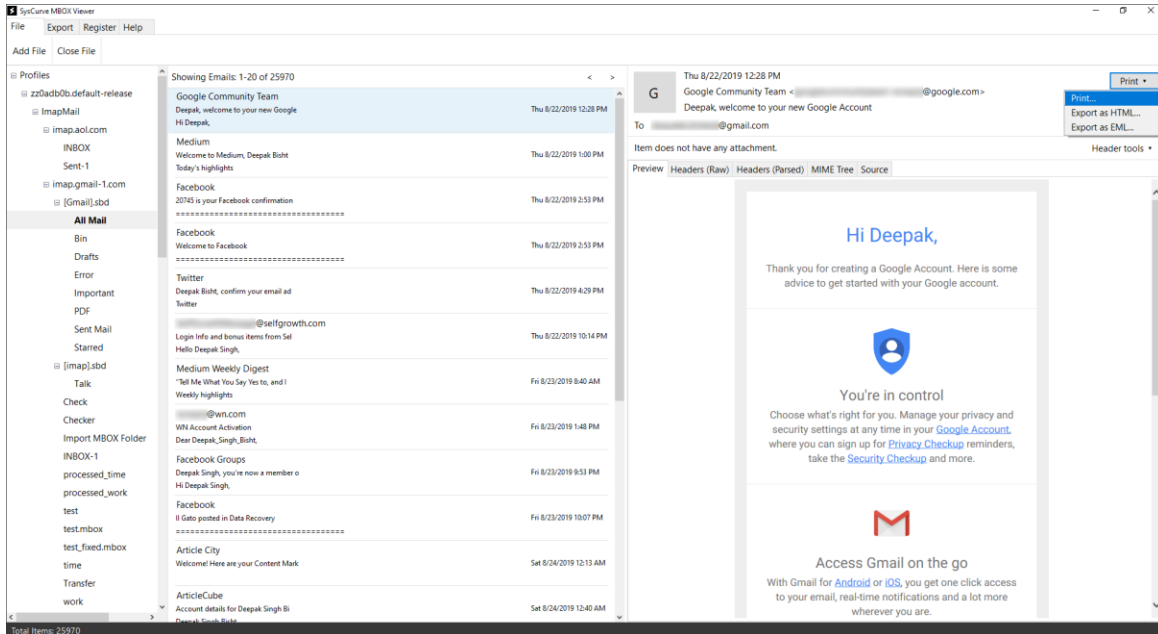
3. Browse to the location where your .mbox files are stored, select one or more files, and click Upload.



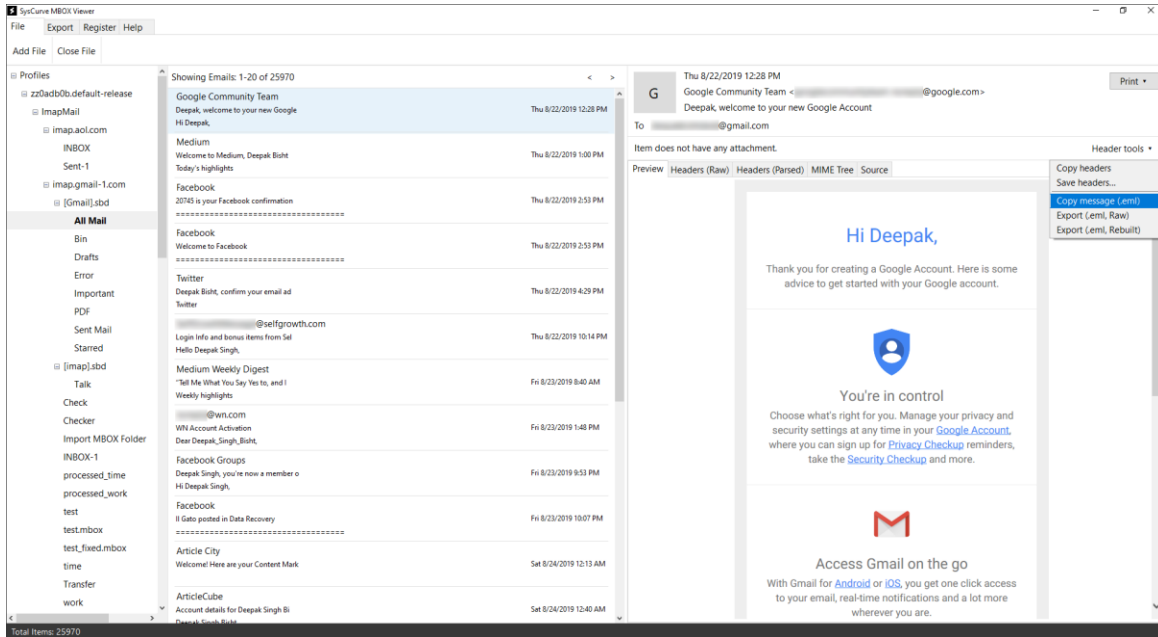
4. Optional: Click any folder to list its messages, then select an email to view its full content—including inline images and basic formatting—in the preview area.



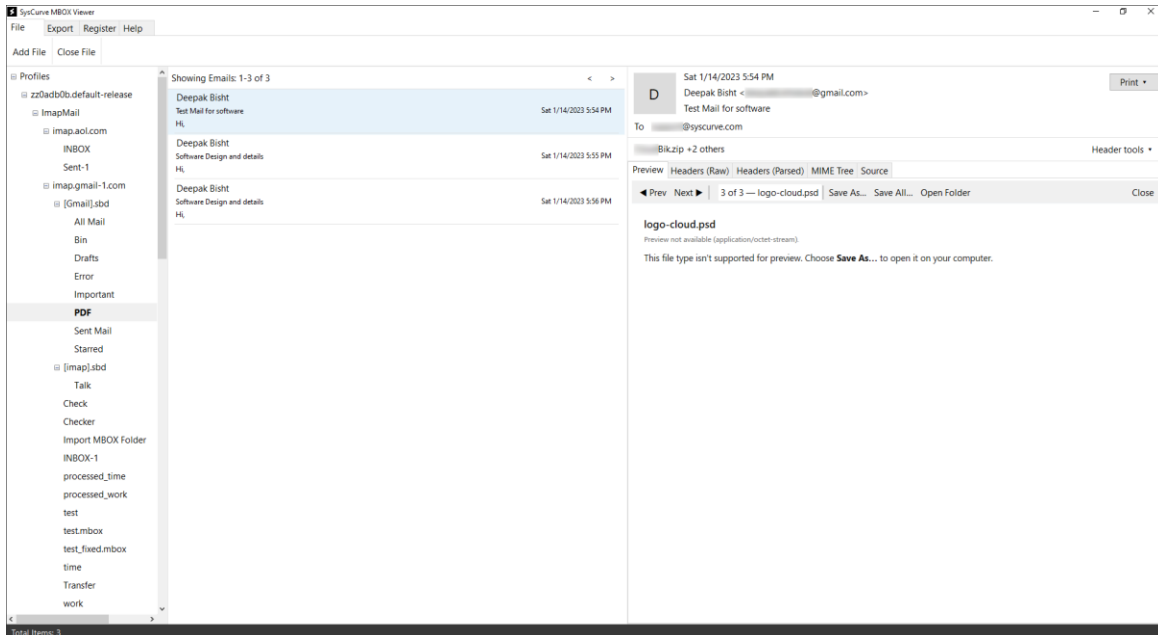
5. Select the email you want to print, click Print from the toolbar or right-click menu, choose either a physical printer or a PDF printer (e.g., Microsoft Print to PDF), adjust any settings if needed, and then click Print to finish.



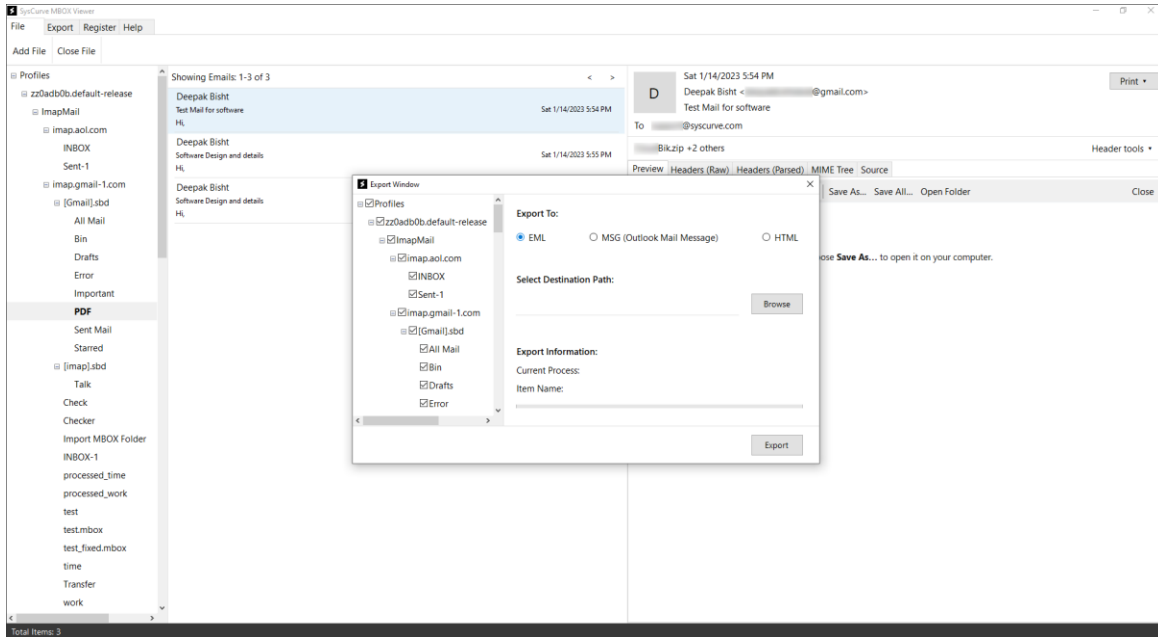
6. Use the message actions to work with headers as needed—for any selected email(s), you can Copy Headers, Save Headers, Copy Message (.eml), or Export (to .eml or Raw) in a single click from the toolbar or context menu.



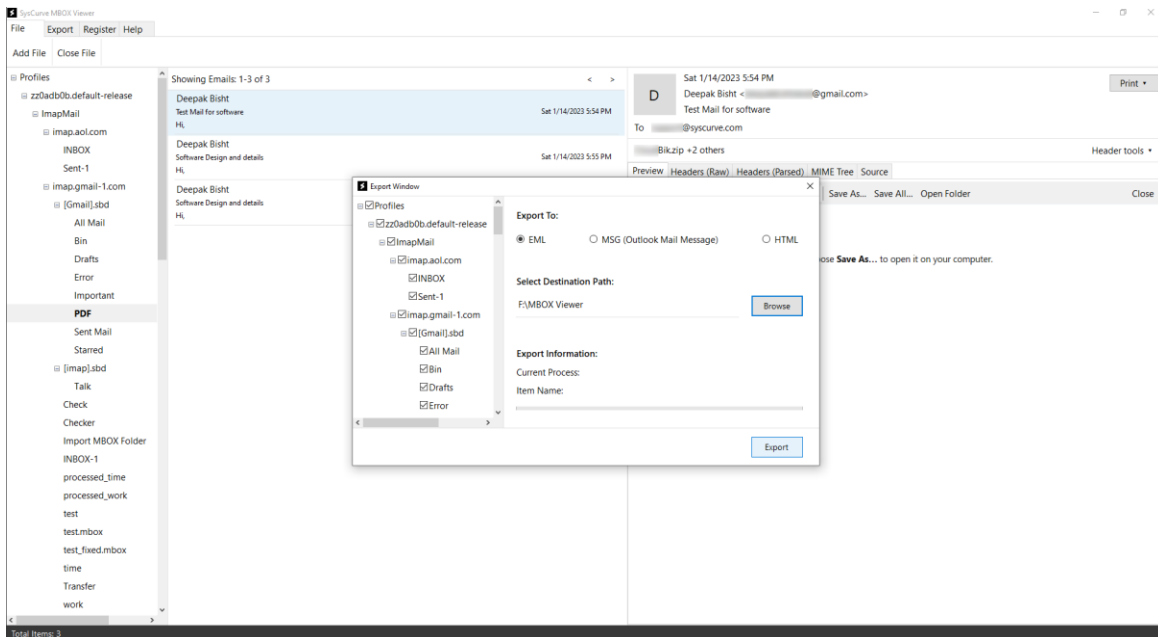
7. Click on any attachment to preview it, then use the available options to download or save it to your computer.



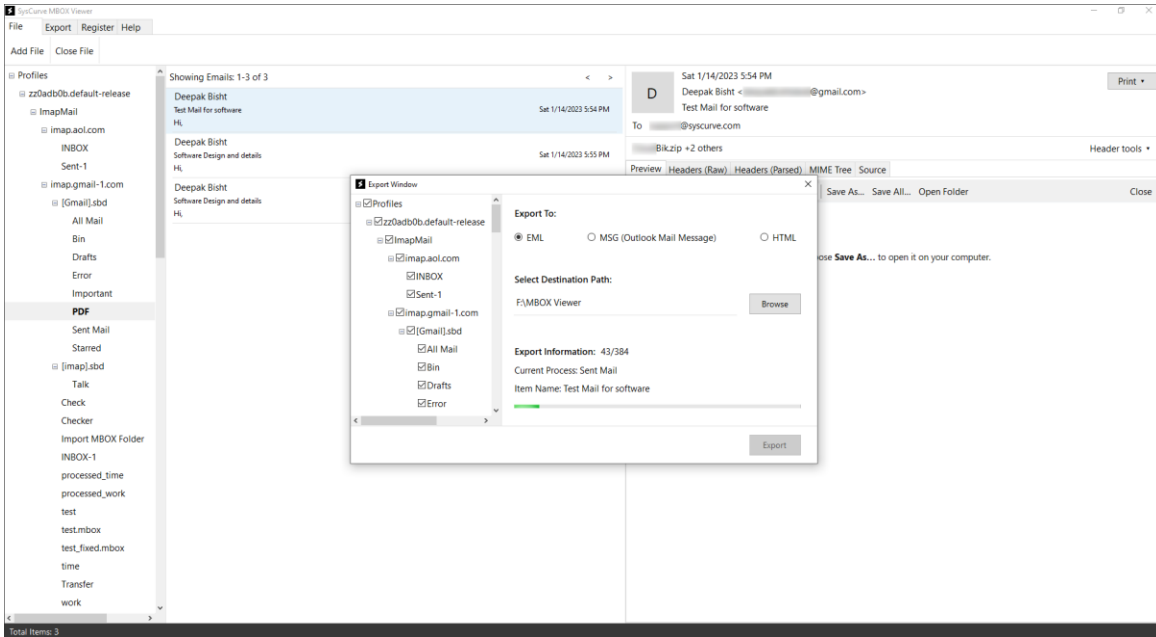
8. In the export settings, select your desired output format, such as EML, MSG, or HTML.



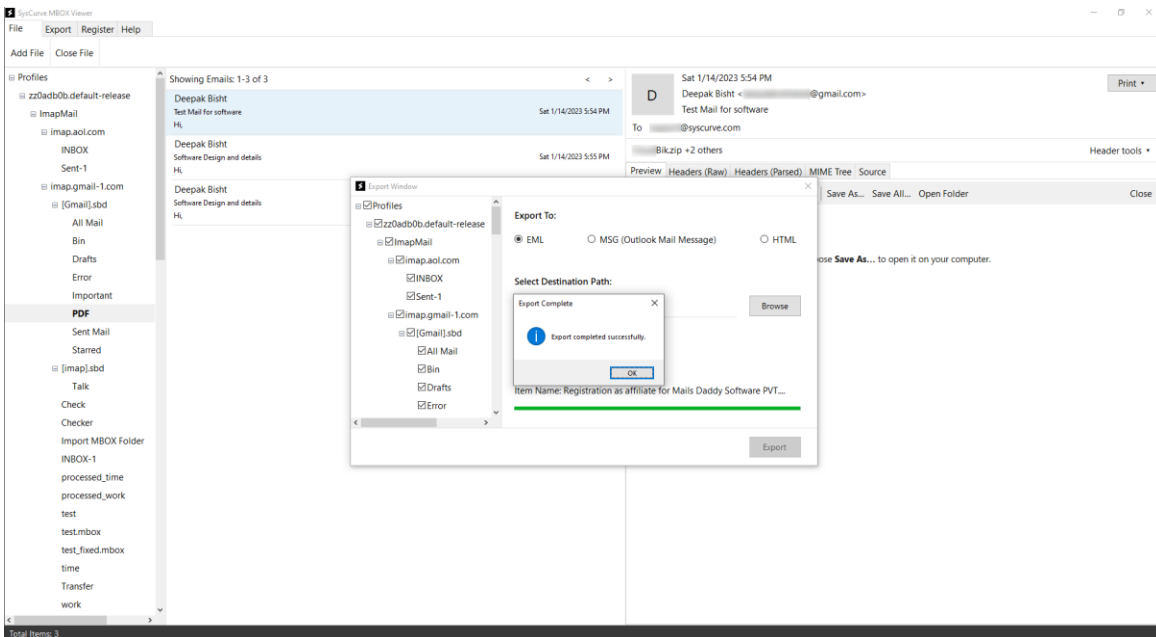
9. Click Browse and choose the destination folder where you want to save the output file.



10. Click Export to begin the process; the tool will scan each MBOX file and convert the emails to your selected format.



11. Wait for the progress bar to reach 100%; when the conversion finishes, a confirmation message will appear on the screen.



Note: For best results, close SysCurve MBOX Viewer before renaming, moving, or opening the exported files in other applications.

Support

If you need help, encounter any issues, or have questions about specific features, you can contact SysCurve support:

- Email: support@syscurve.com

- Website: <https://www.syscurve.com/mbox-viewer-tool.html>

Our support team can assist with installation, usage questions, and general troubleshooting related to SysCurve MBOX Viewer.