

SysCurve MSG Attachment Extractor - Working Guide

Introduction

SysCurve MSG Attachment Extractor is built specifically to scan your Outlook .MSG files and pull out every attached file without modifying the original messages. Whether you prefer attachments organized in a clean folder tree that mirrors your source structure or combined into a single review folder, this utility takes care of the extraction process quickly and efficiently.

Key Features

- Extract attachments from Outlook MSG files with folder-based organization
- Option to store all attachments in one consolidated destination folder
- Integrated message preview before running the extraction
- Optimized for smooth performance on all modern Windows systems

System Requirements

- Operating System: Windows 7, 8, 8.1, 10, 11
- Processor: Intel or equivalent compatible processor
- RAM: 8 GB or more recommended for best performance

- Hard Disk Space: At least 500 MB for setup, plus additional space for exported attachments
- .NET Framework: Version 4.7.2 or higher

Installation Steps

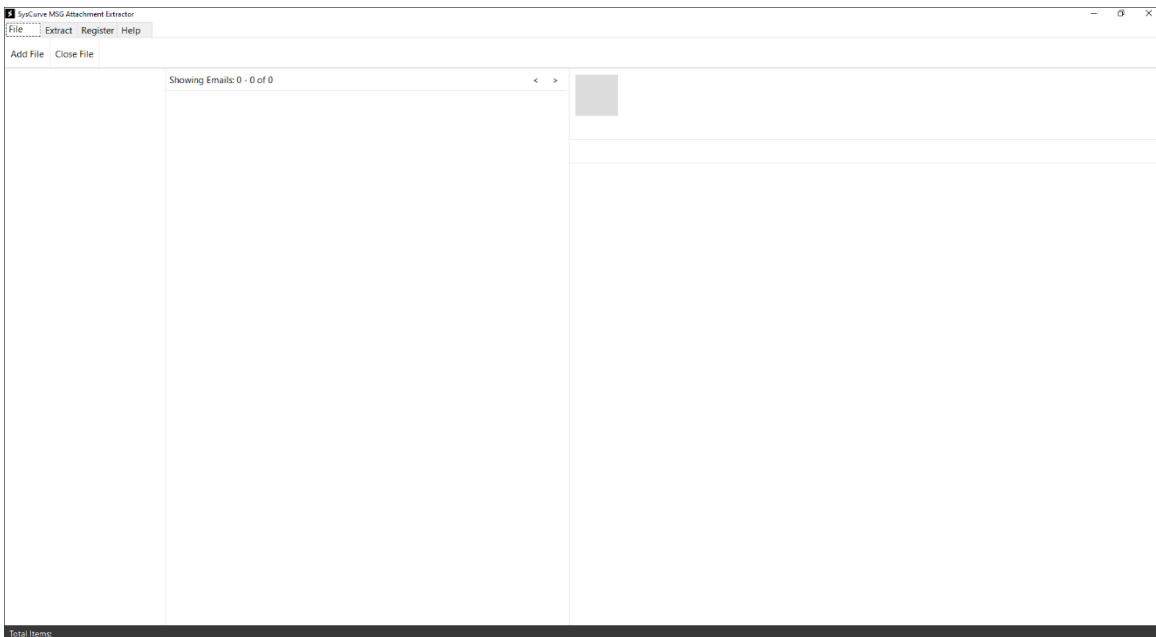
1. Visit the official SysCurve website and download SysCurve MSG Attachment Extractor.
2. Run the installer and follow the on-screen prompts to complete the installation.
3. Once installed, launch the tool using the desktop shortcut or from the Windows Start Menu.

How to Use

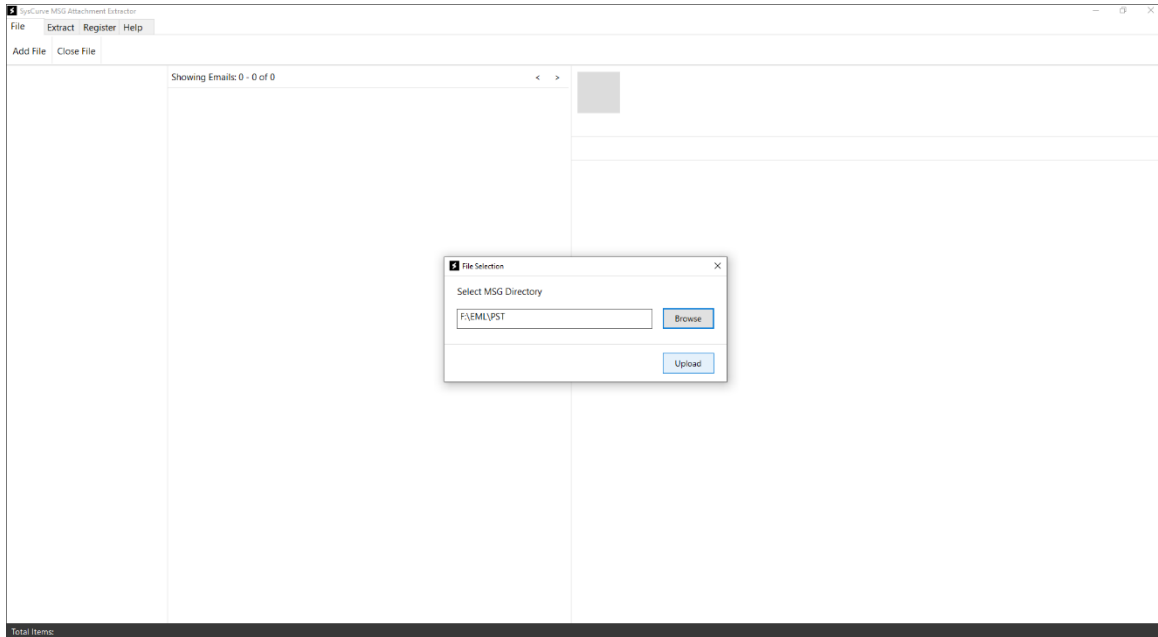
1. Open the SysCurve MSG Attachment Extractor application.



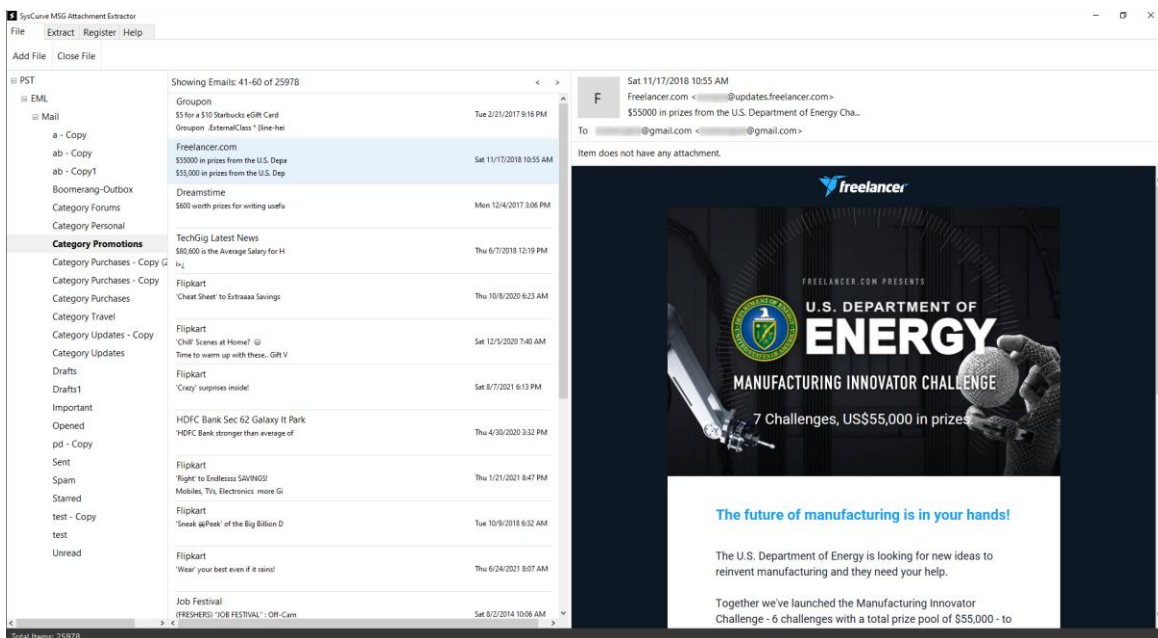
2. On the main window, click Add File.



3. Browse to the location of your MSG folder that contains them, then click Upload.



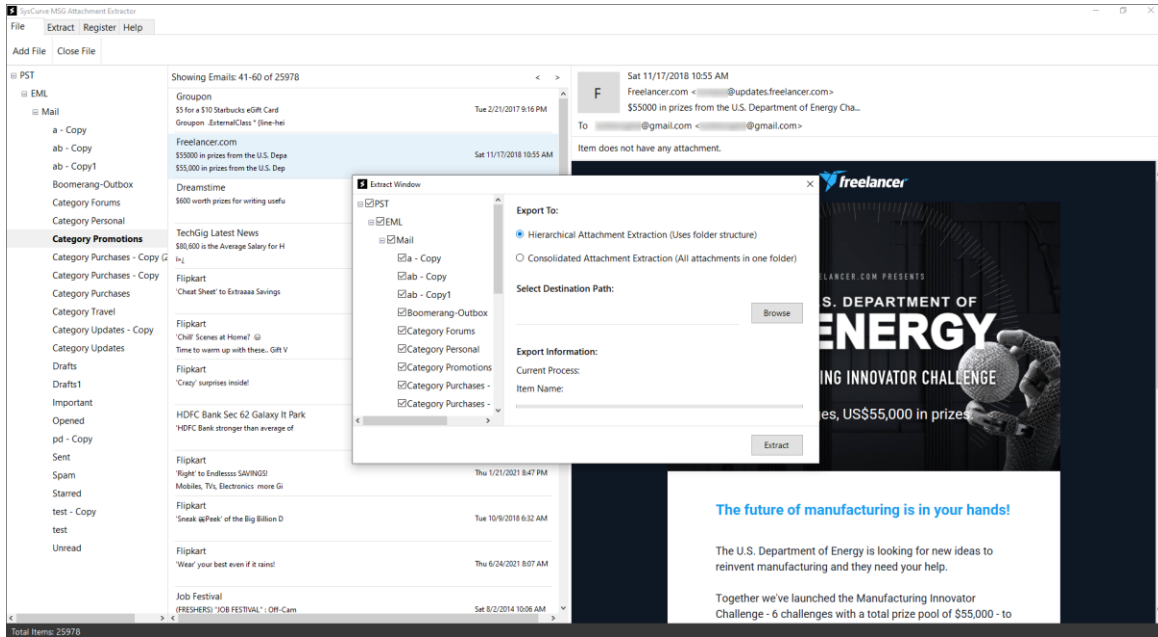
4. Optional: Click on any listed email to preview its body and attachments before extraction.



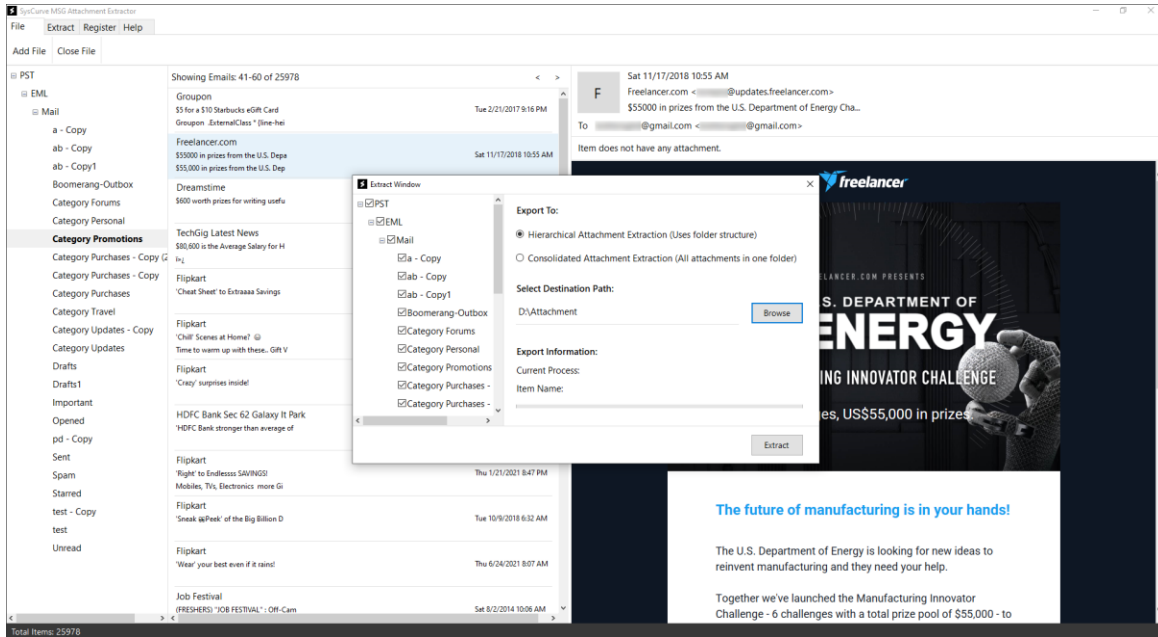
5. Click on Extract to begin the attachment export process.

6. Select the desired extraction mode, for example:

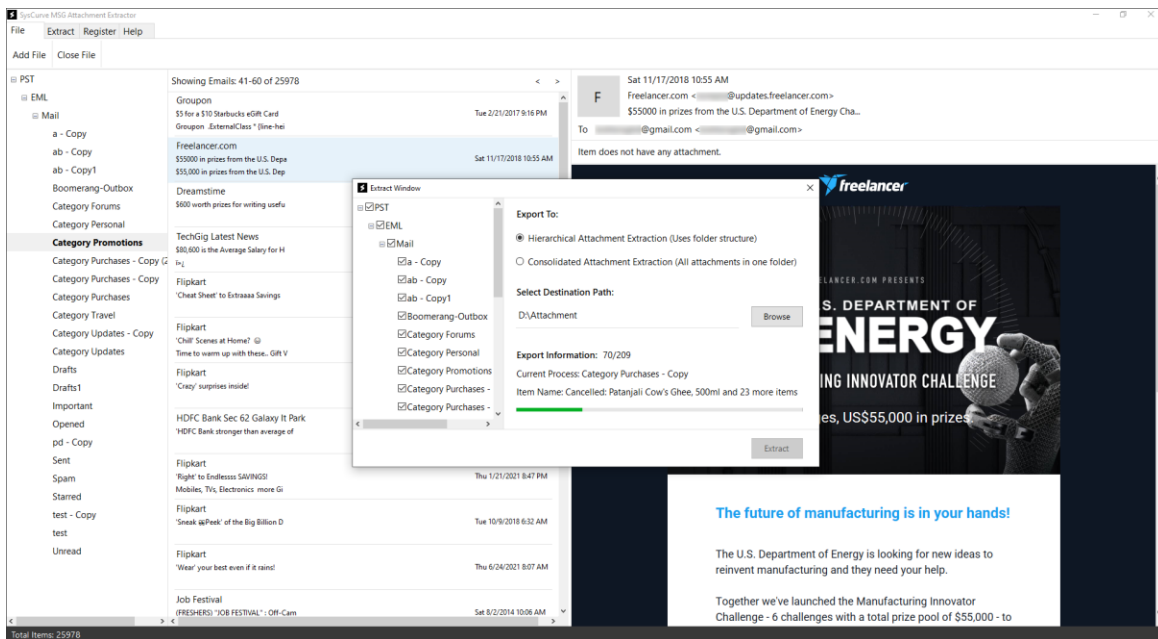
- 1) Hierarchical Extraction – Attachments are saved in folders that reflect the original MSG file or folder structure.
- 2) Consolidated Extraction – All attachments are saved together inside a single output folder.



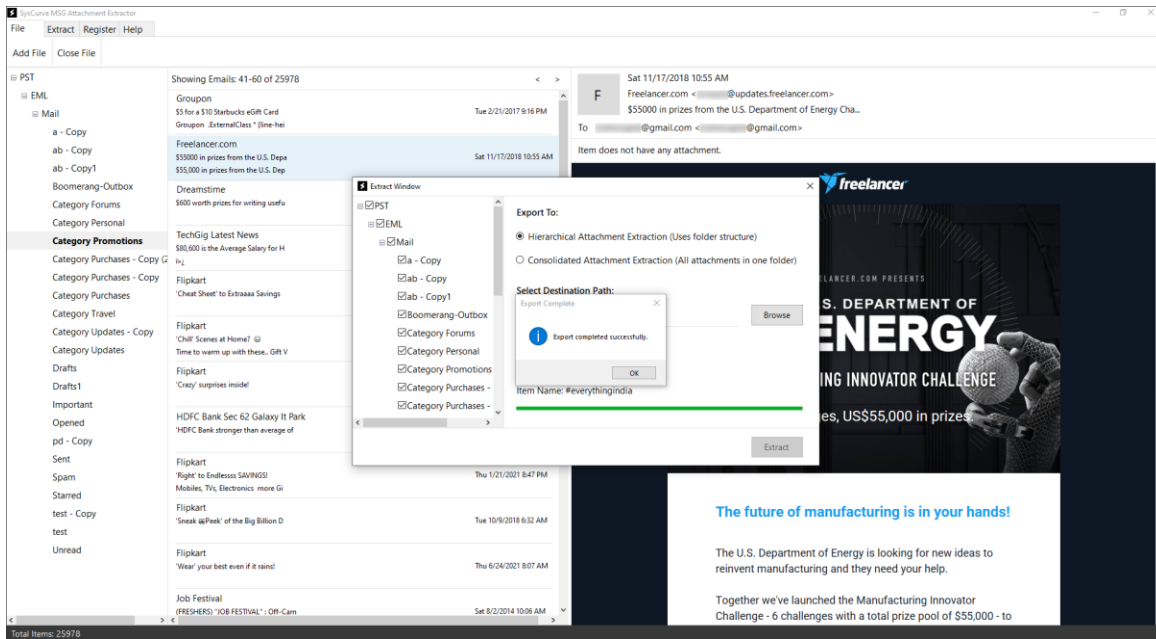
7. Choose the destination folder where the extracted attachments should be stored.



8. Review your settings and start the extraction process.



9. Allow the software to complete the job. When finished, you'll see a confirmation message indicating that all attachments have been successfully exported.



Note: For a smoother experience, close the SysCurve MSG Attachment Extractor before renaming, moving, or reorganizing the folders containing the extracted attachments.

Support

If you have questions or encounter any issues while using the software, you can contact our support team:

- Email: support@syscurve.com
- Website: <https://www.syscurve.com/msg-attachment-extractor-tool.html>

We are committed to helping you get the most out of SysCurve MSG Attachment Extractor and ensuring a smooth, hassle-free workflow.