

# SysCurve MSG Viewer Tool - Working Guide

---

## Introduction

SysCurve MSG Viewer is a lightweight Windows tool that lets you open, read, and analyze Outlook .msg files without installing Microsoft Outlook or any other email client. You can browse folders full of MSG files, view complete messages with rich formatting, and export your emails to multiple formats. The software supports bulk conversion of MSG emails to MBOX, EML, and HTML, and also offers options to print messages, save them as PDF (using any PDF printer), and inspect detailed headers, making it a practical choice for everyday users, support teams, and investigators who regularly work with Outlook MSG data.

## Key Features

- Load and view MSG files created by Microsoft Outlook or extracted from PST/OST mailboxes.
- Export large sets of MSG emails in one go to MBOX, EML, or HTML.
- Print selected messages or send them to a PDF printer (for example, Microsoft Print to PDF) for digital archiving.
- Message-level options to copy or save individual MSG/EML items and open them in a dedicated preview panel.

- Header inspection tools to see both parsed headers (clean, structured view) and raw headers (original header text).
- Attachment preview with the ability to save selected attachments directly from the viewer.
- Clear, responsive interface designed for smooth navigation, even with large collections of MSG files.
- Works reliably on all commonly used desktop versions of Windows.

## System Requirements

- Operating System: Windows 7, 8, 8.1, 10, 11
- Processor: Intel or equivalent compatible CPU
- RAM: 8 GB or more recommended, particularly when processing a large volume of MSG files
- Hard Disk Space: Around 500 MB for installation, plus extra space for exported data and temporary files
- .NET Framework: Version 4.7.2 or later

## Installation Steps

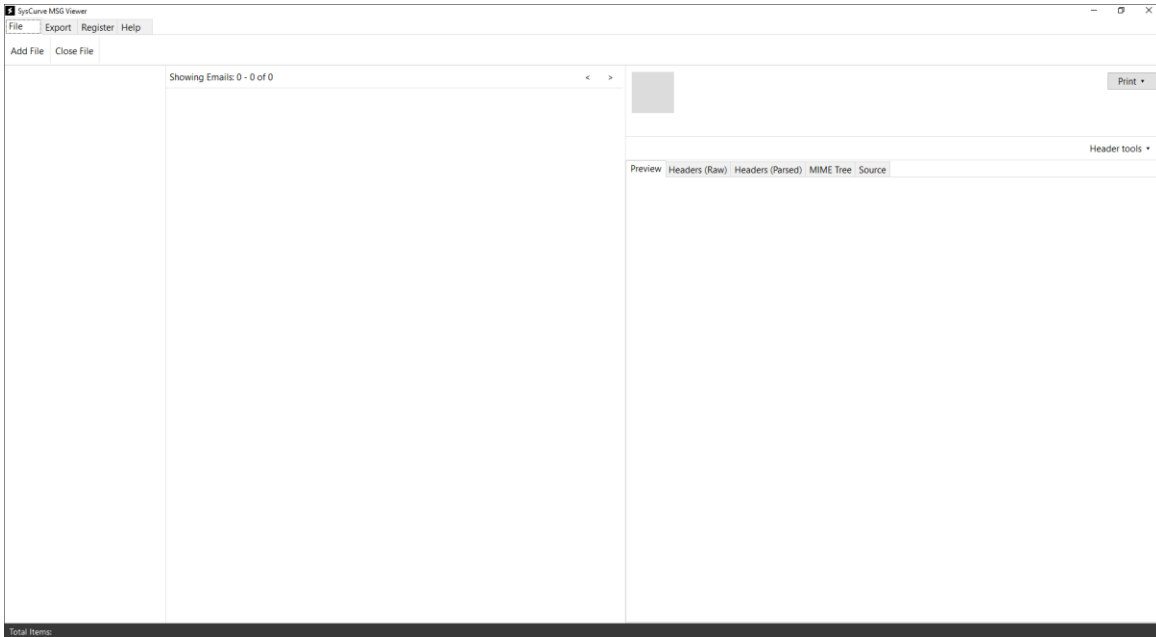
1. Download SysCurve MSG Viewer from the official SysCurve website.
2. Run the downloaded setup .exe and follow the prompts displayed by the installation wizard.
3. After the installation completes, start SysCurve MSG Viewer using the desktop shortcut or from the Windows Start Menu.

## How to Use

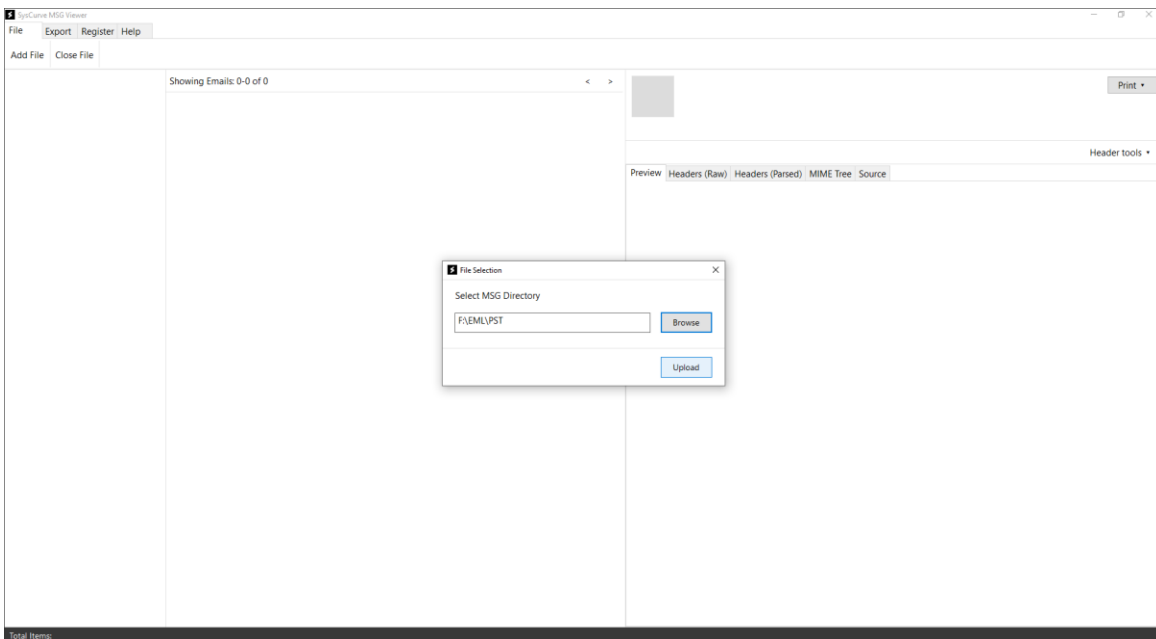
1. Launch SysCurve MSG Viewer from the desktop icon or Start Menu.



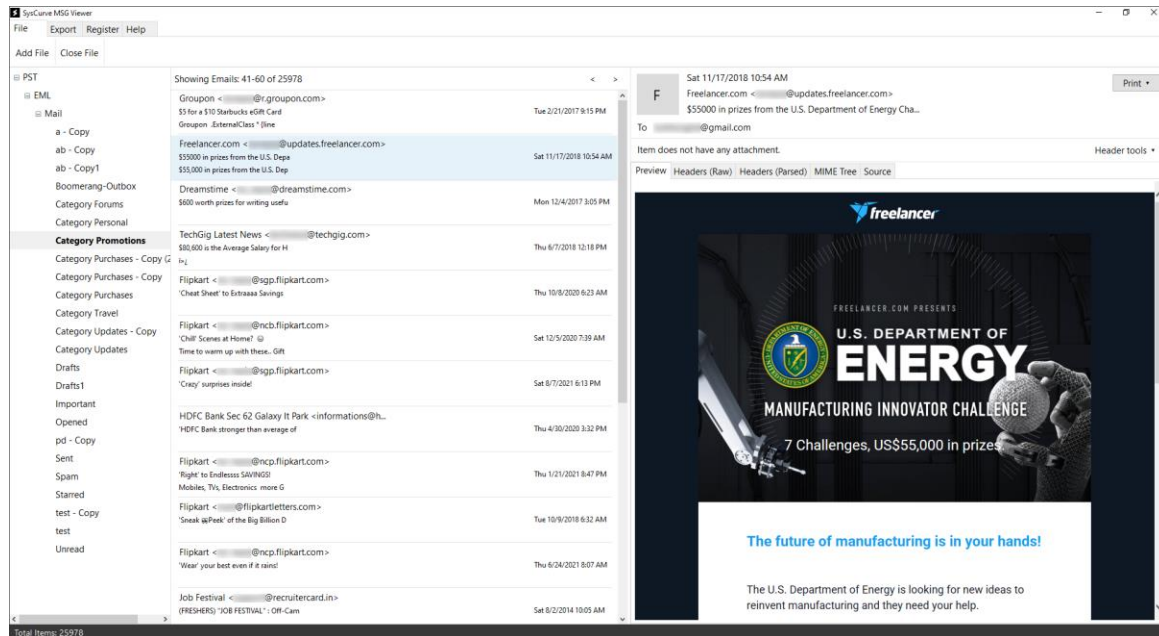
2. On the main screen, click Add File.



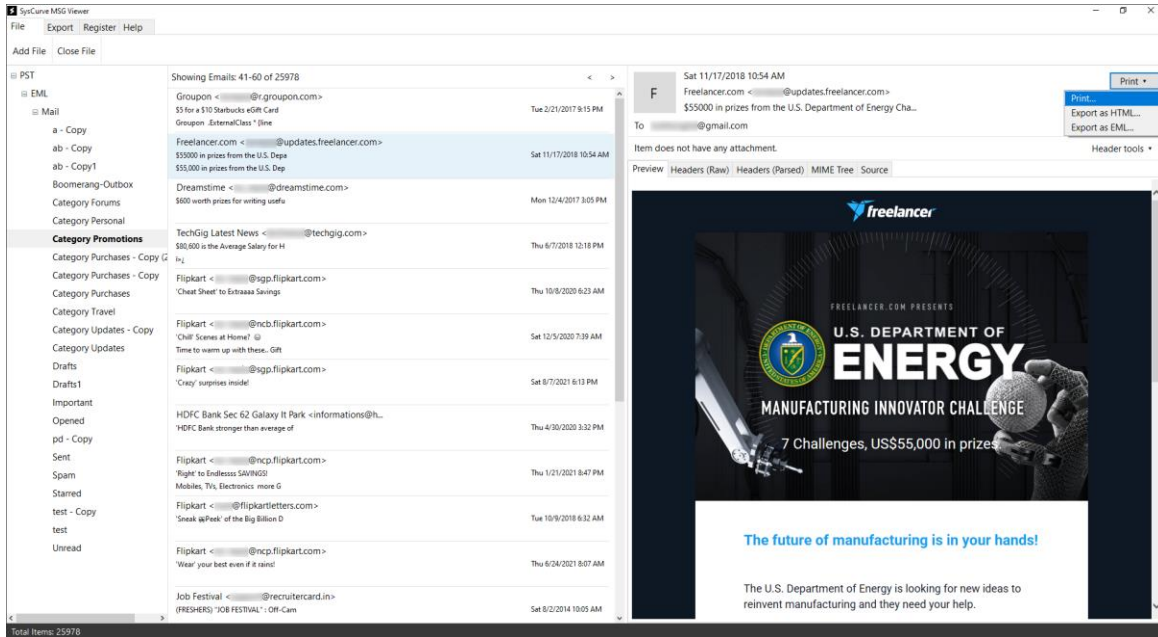
3. Browse to the directory that holds your .msg files, select a folder containing them, and then click Upload.



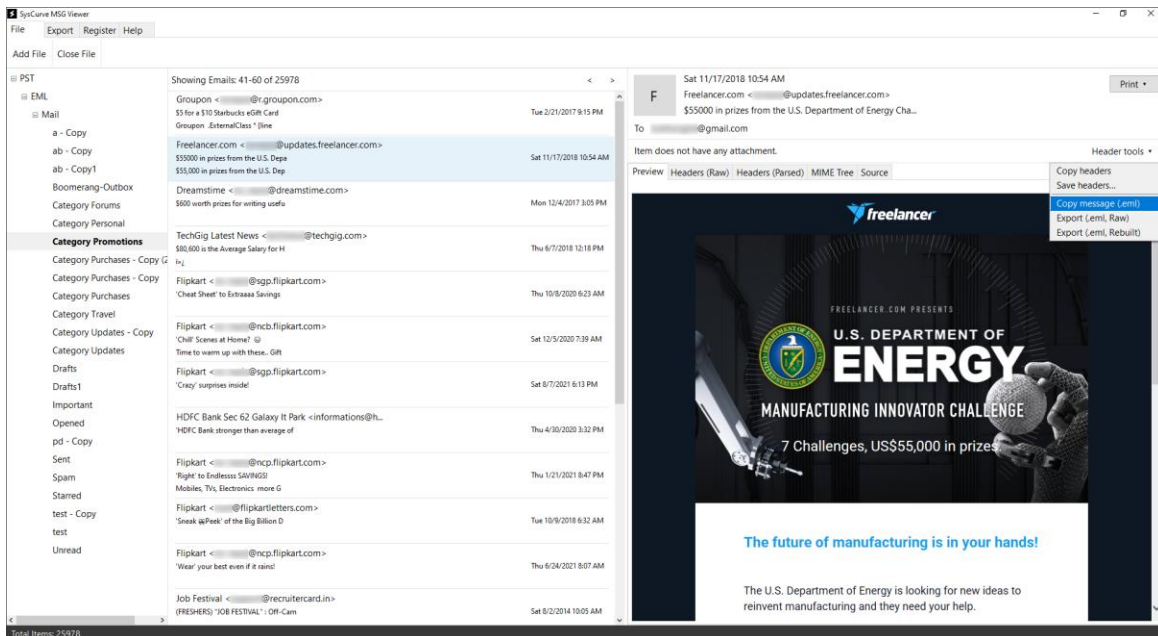
4. Optional: Click a folder (if shown) to load its messages, choose an email from the list to open it in the preview area, and scroll through the entire message—including formatting and inline images.



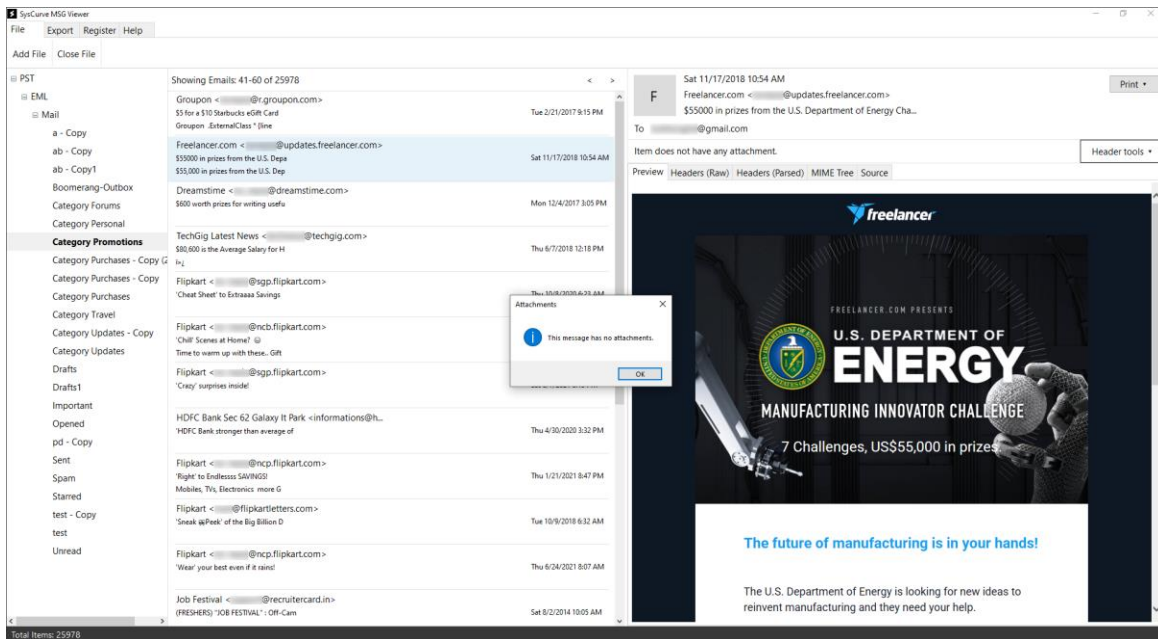
5. To print a message, select the email, click Print from the toolbar or right-click menu, choose a physical printer or a PDF printer (such as Microsoft Print to PDF), adjust any settings if necessary, and then click Print to complete the action.



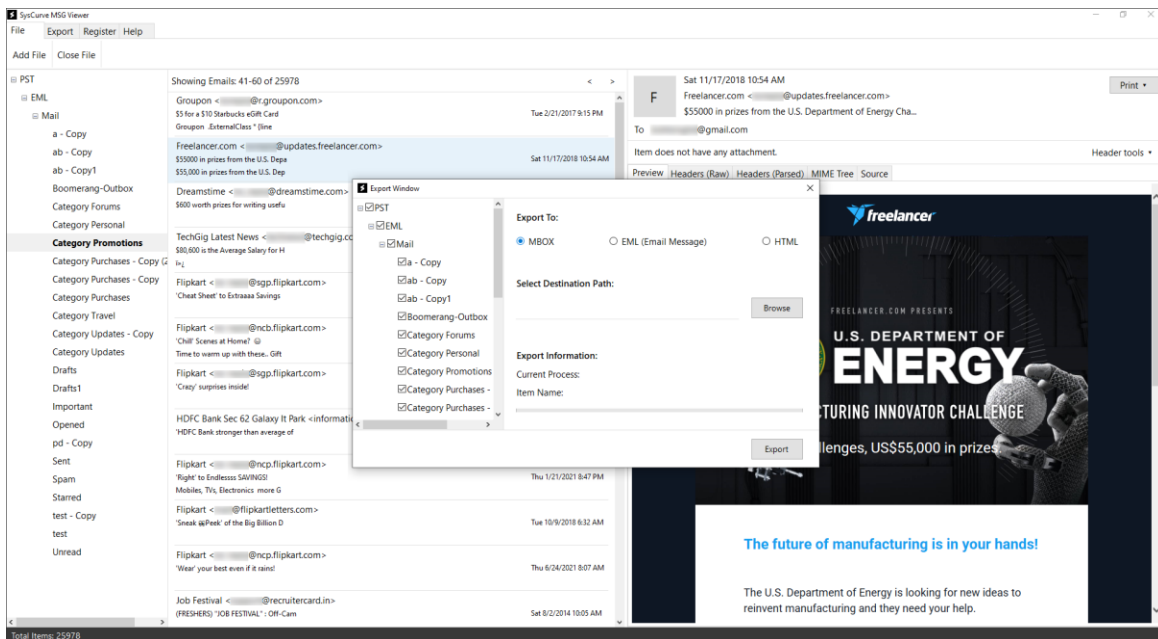
6. Use the available message actions to handle MSG content and headers—for any selected email(s), you can Copy Headers, Save Headers, Copy Message (.eml/.msg), or Export (for example to .eml or Raw) directly from the toolbar or context menu.



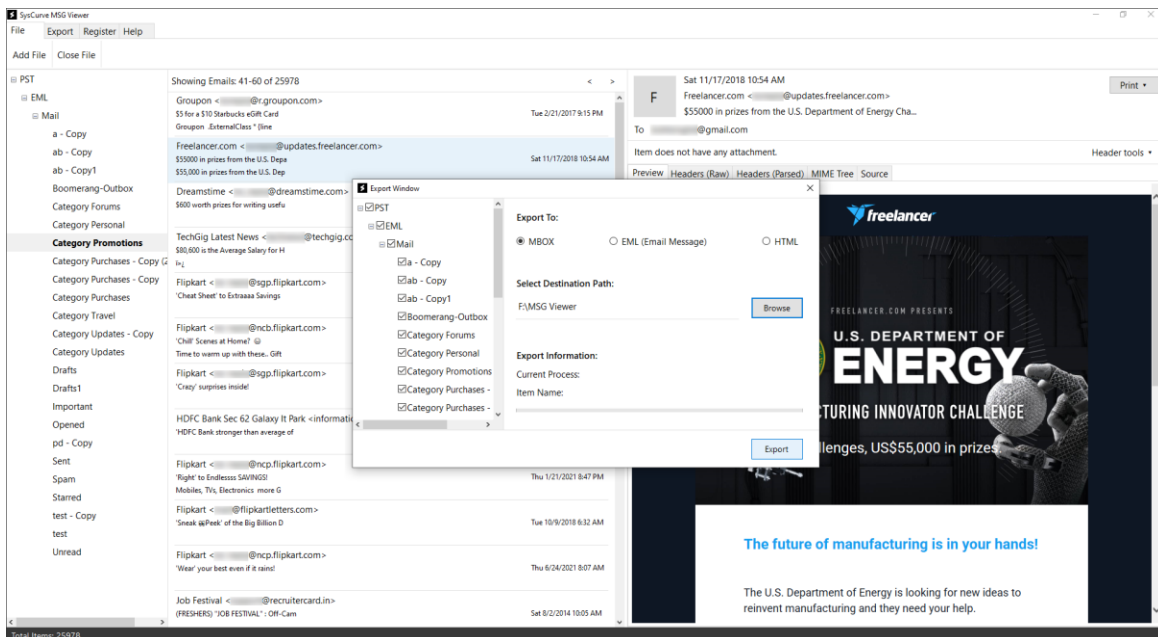
7. Click an attachment to view it, then choose the available option to save or download it to your computer.



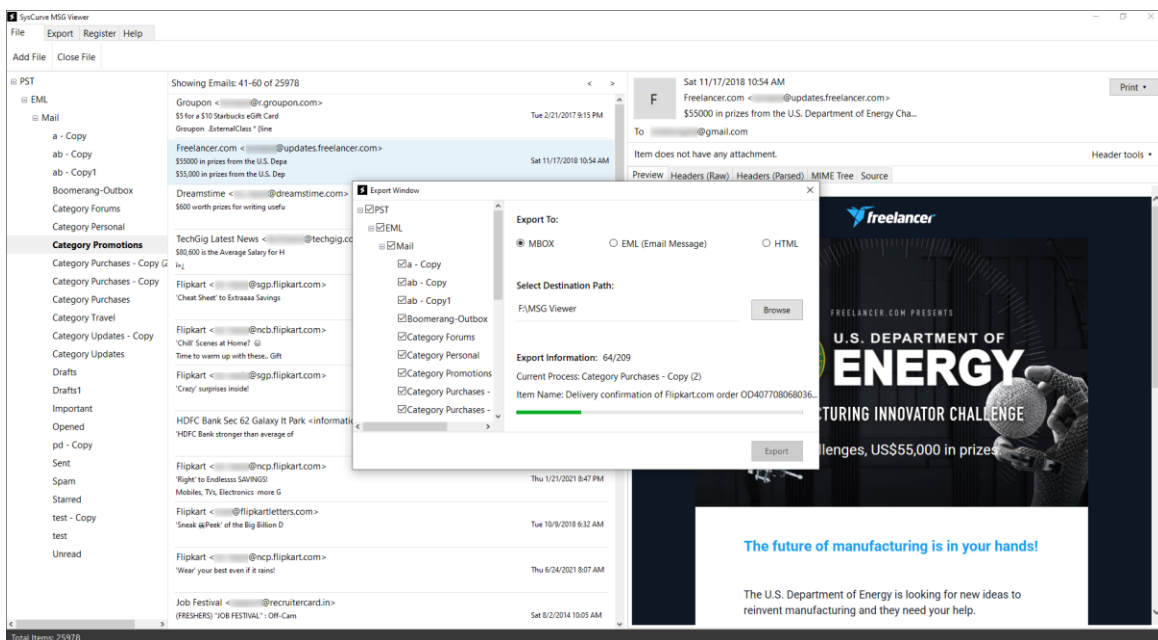
8. When exporting, select your desired output format in the export dialog—such as MBOX, EML, or HTML.



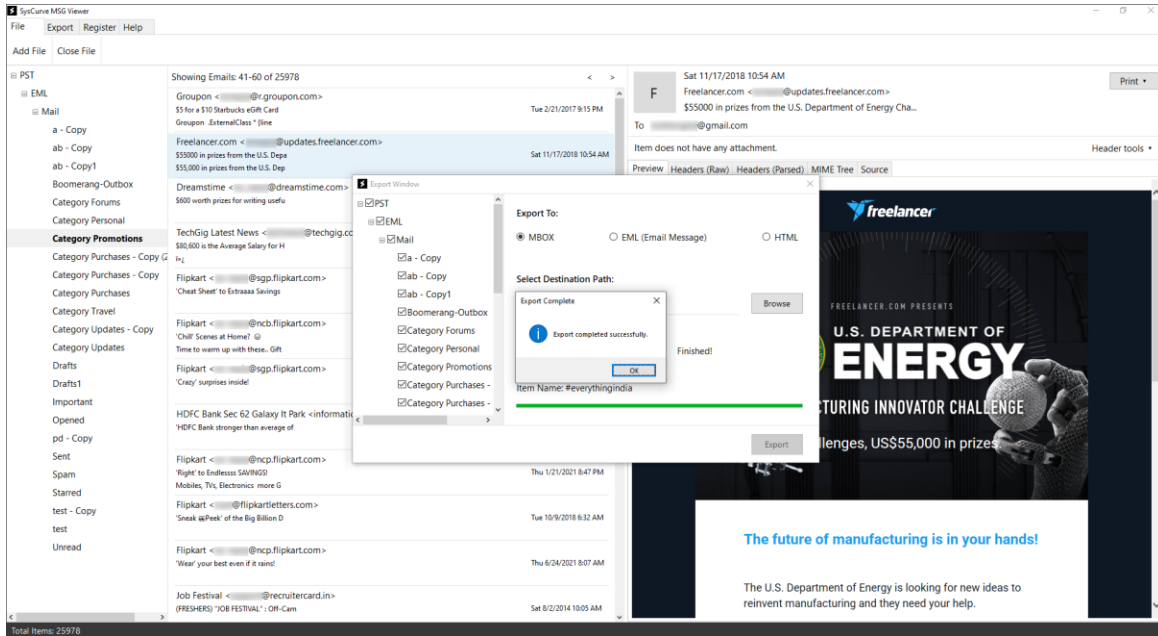
9. Click Browse and choose the destination folder where the converted files will be saved.



10. Begin the export by clicking Export; the application will process each selected MSG file and convert the emails into the specified format.



11. Wait for the progress bar to reach completion; once the operation finishes, a confirmation message will appear indicating that the conversion has been successfully completed.



Note: For smoother handling of your exported messages, it is recommended to close SysCurve MSG Viewer before renaming, moving, or opening the converted files in other applications.

## Support

If you need help with installation, usage, or run into any issues while working with the tool, you can contact the SysCurve support team:

- Email: [support@syscurve.com](mailto:support@syscurve.com)

- Website: <https://www.syscurve.com/msg-viewer-tool.html>

Our team can assist you with setup questions, feature guidance, and troubleshooting related to SysCurve MSG Viewer.