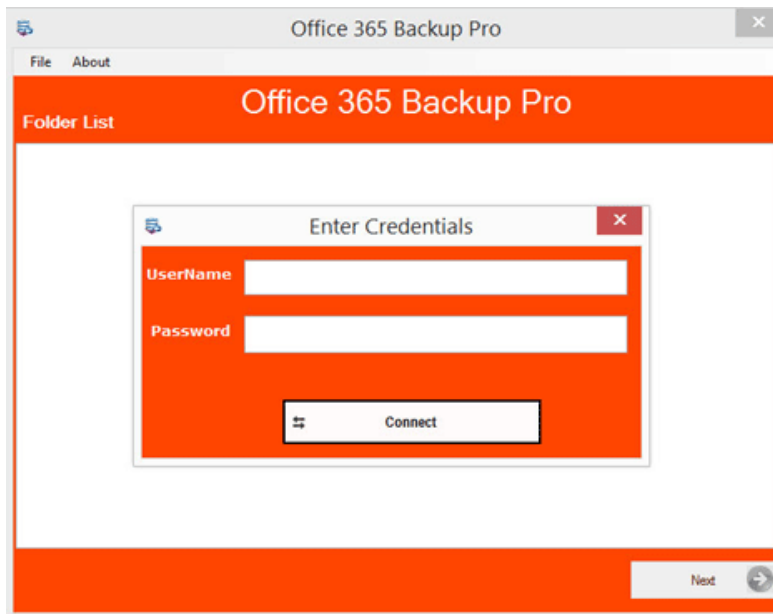
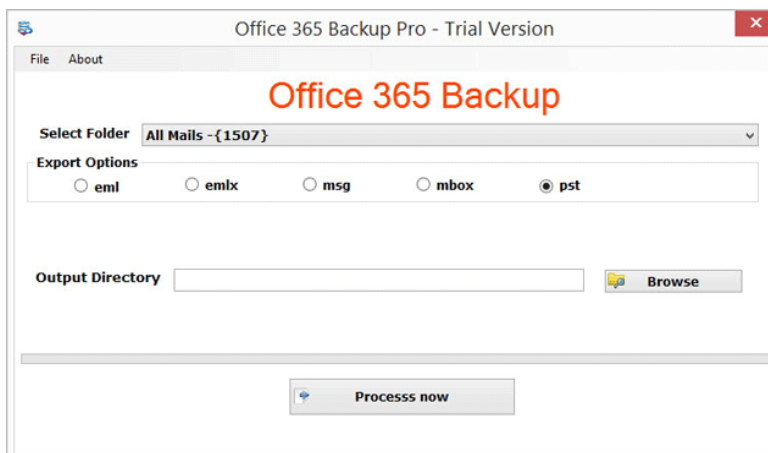


# Steps to Export Office 365 to PST

**Step 1.** Launch the SysCurve Office 365 Backup tool. Enter your Office 365 Email ID and Password. Click on the Connect button.



**Step 2:** Select Office 365 Folders you want to export. After that, select PST as an Export Type.



**Step 3.** Click on the Browse button and provide a path to save the PST file format. After that, click on the Process Now button to start the backup process.

