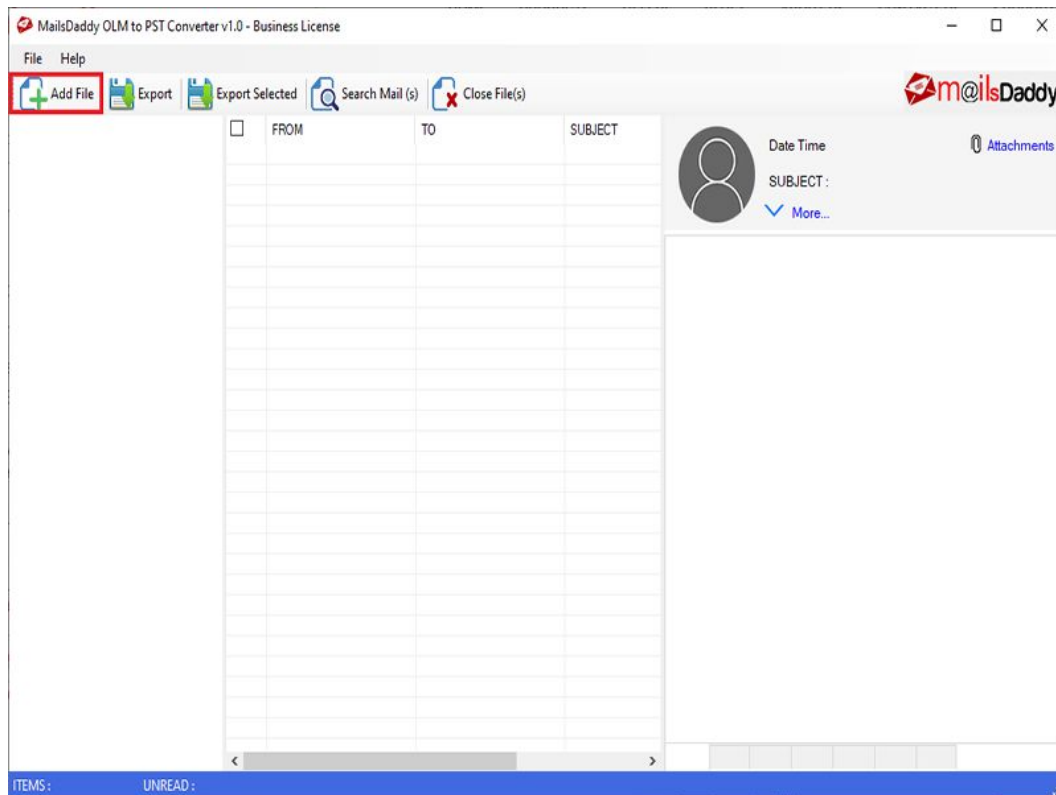


Steps to Convert OLM to PST

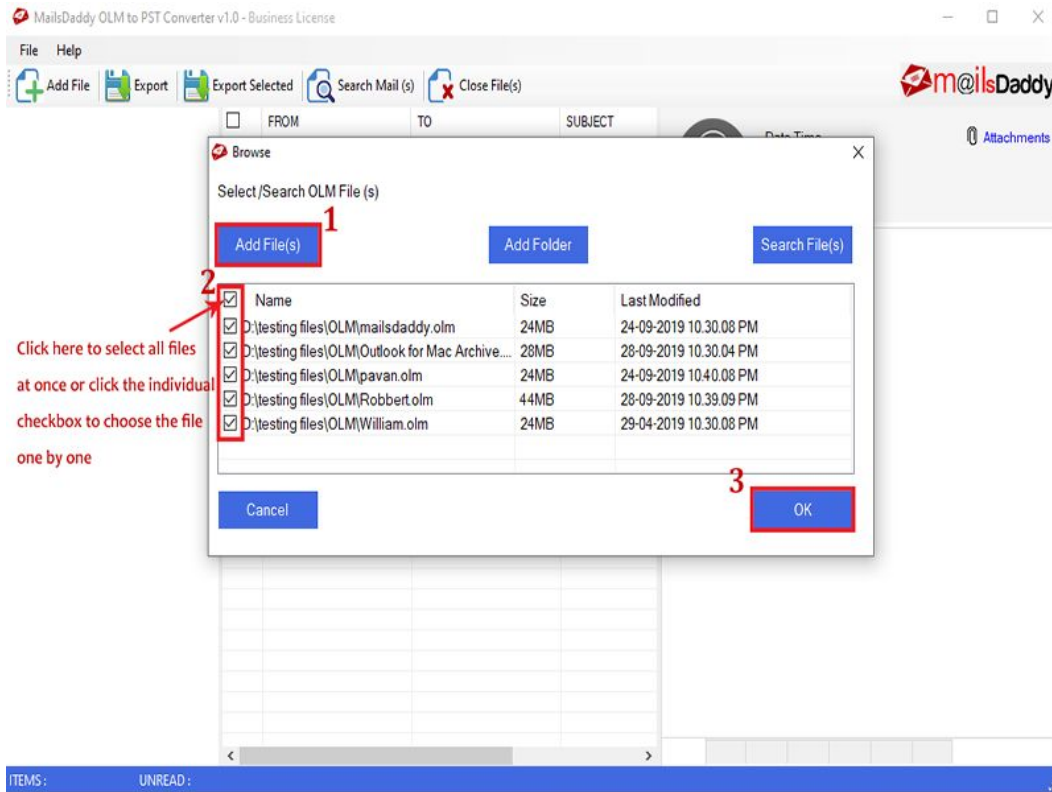
Step 1. Homepage of OLM to PST Converter. Click on the Add File option to add the OLM file.



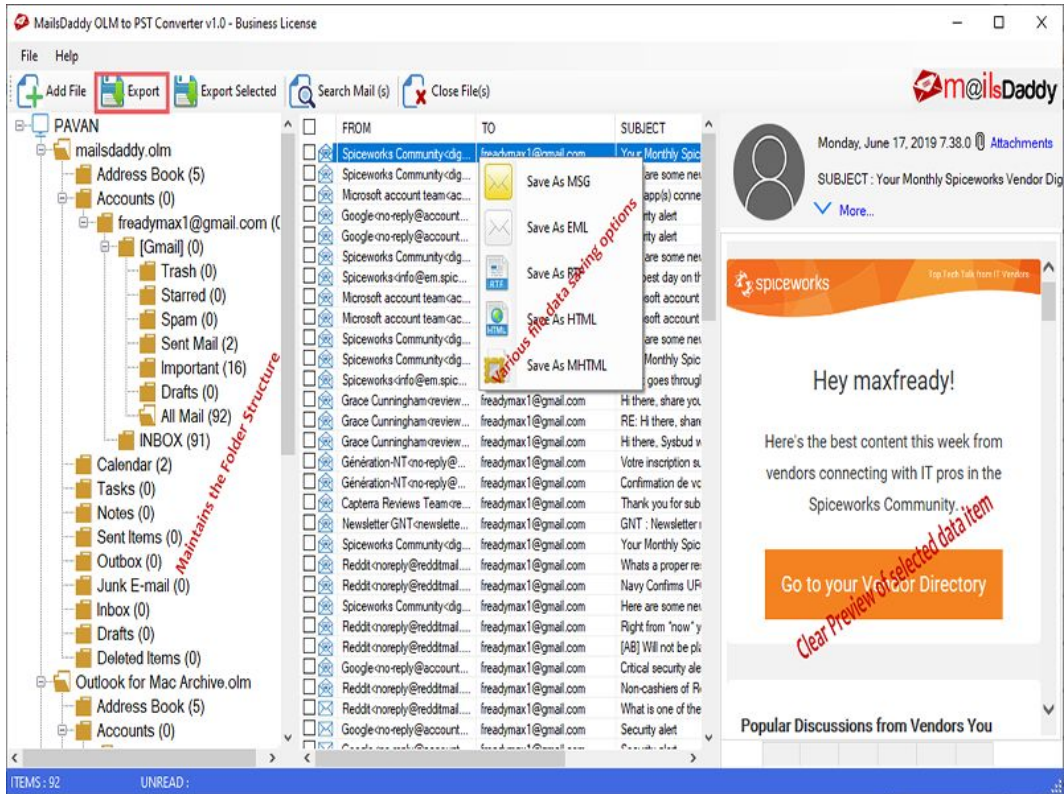
Step 2. Select OLM files, which you want to convert

1. Add File(s): Add the OLM file if you know the location.
2. Add Folder: Use this option, if you have a folder with multiple OLM files saved in it.
3. Search File(s): This option will help you to find OLM files saved in a drive.

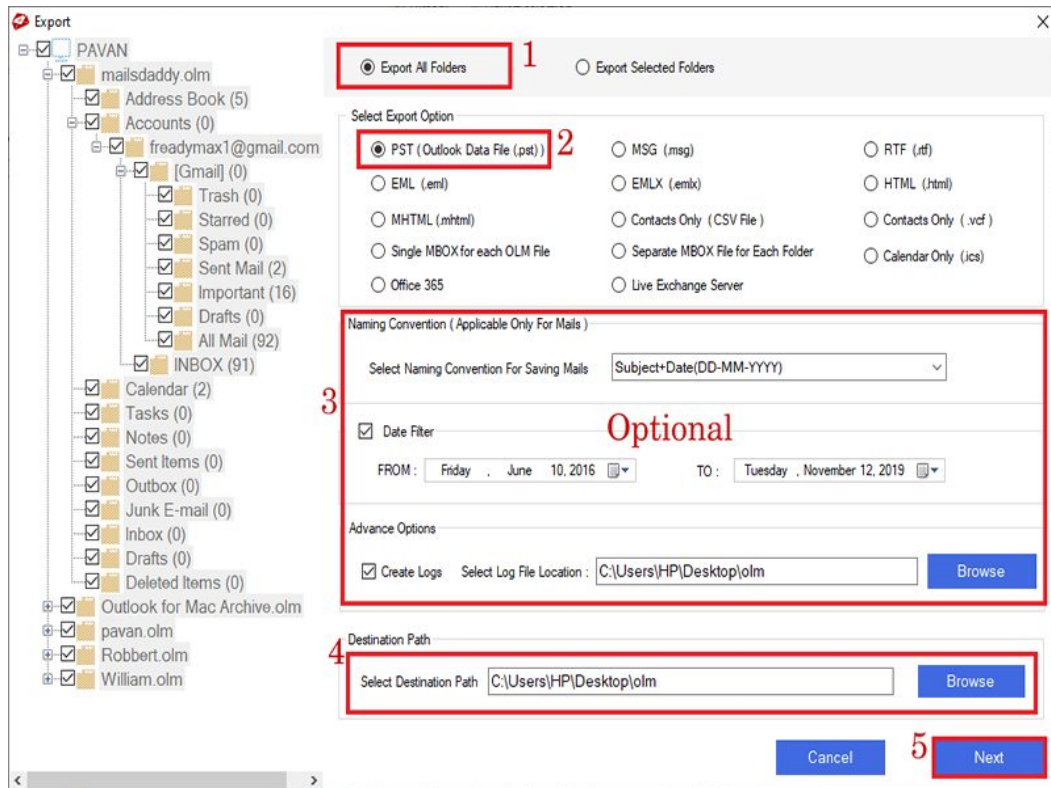
Please select the checkboxes and click on the Ok button.



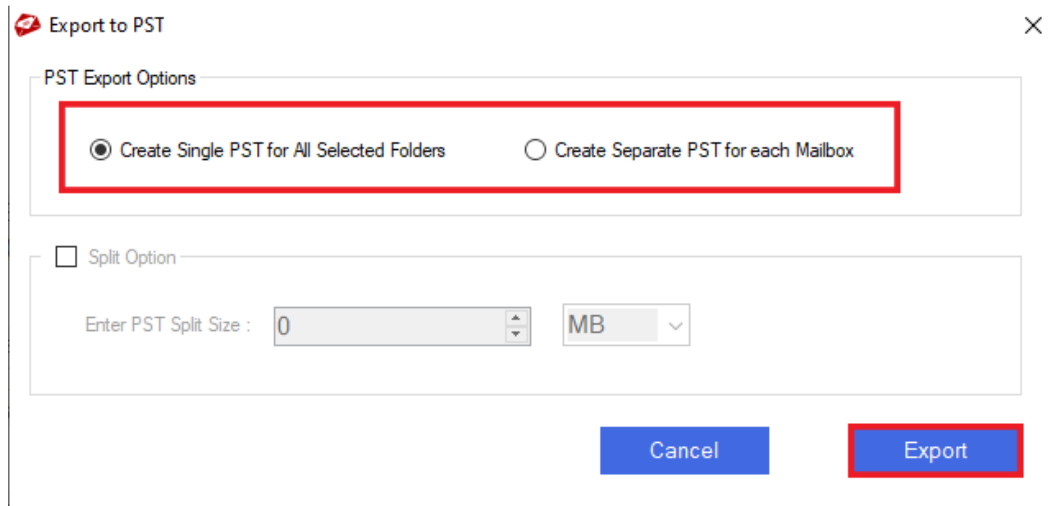
Step 3. The software will show you the preview of mailbox items. Click on any item, if you want to see the message details. After the preview, click on the Export option.



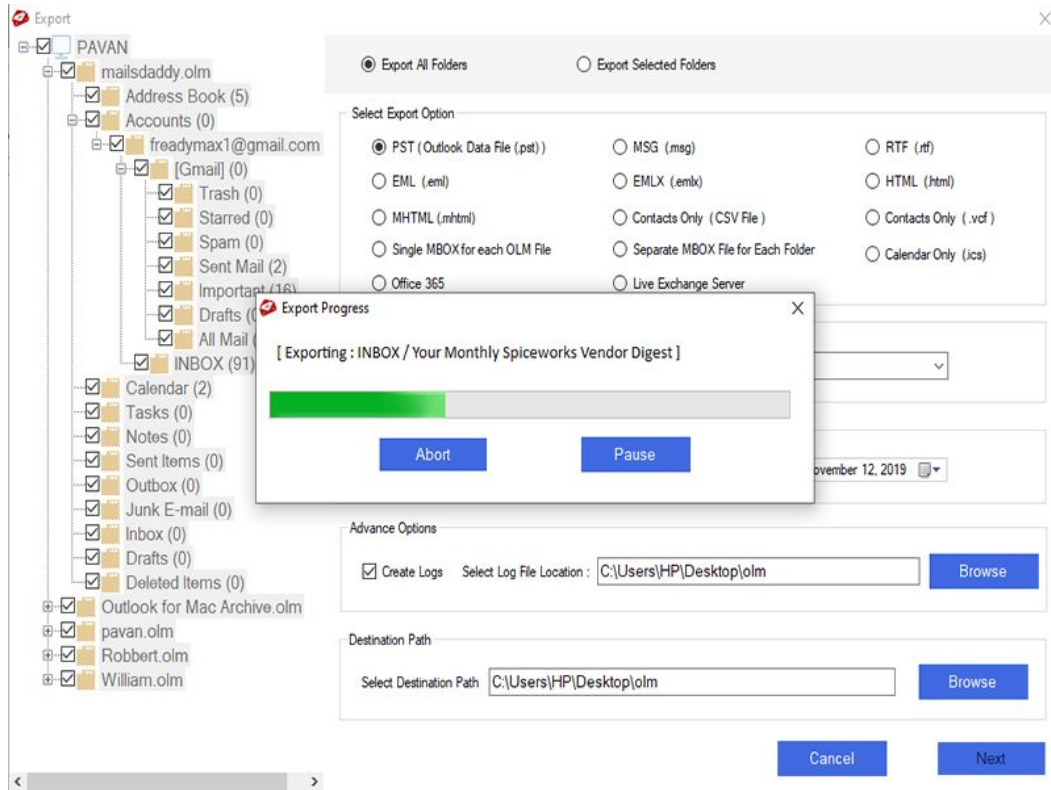
Step 4. Select the Folder option as per your requirement. Choose PST as an Export option and set filters, if you want to convert selected data. Provide a destination path and click on the Next button.



Step 5. Select the PST export option as per your need. Select the split option, if you want to split the PST file and click on the Export button.



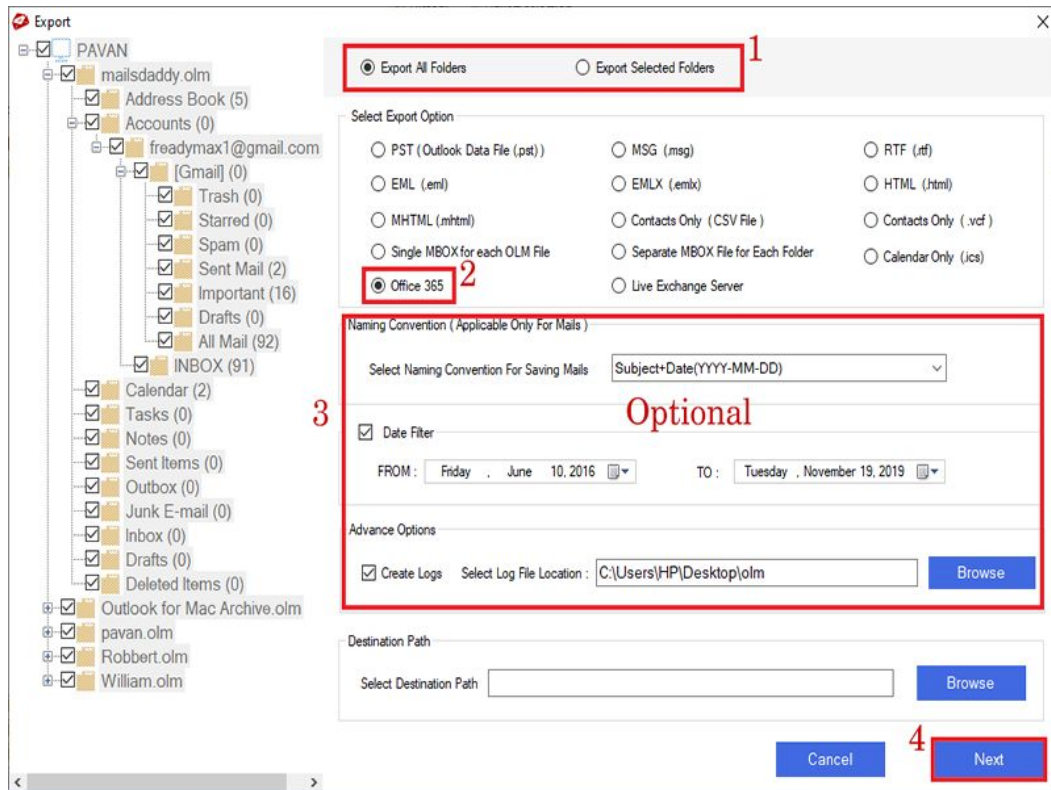
Step 6. Wait until the process gets completed.



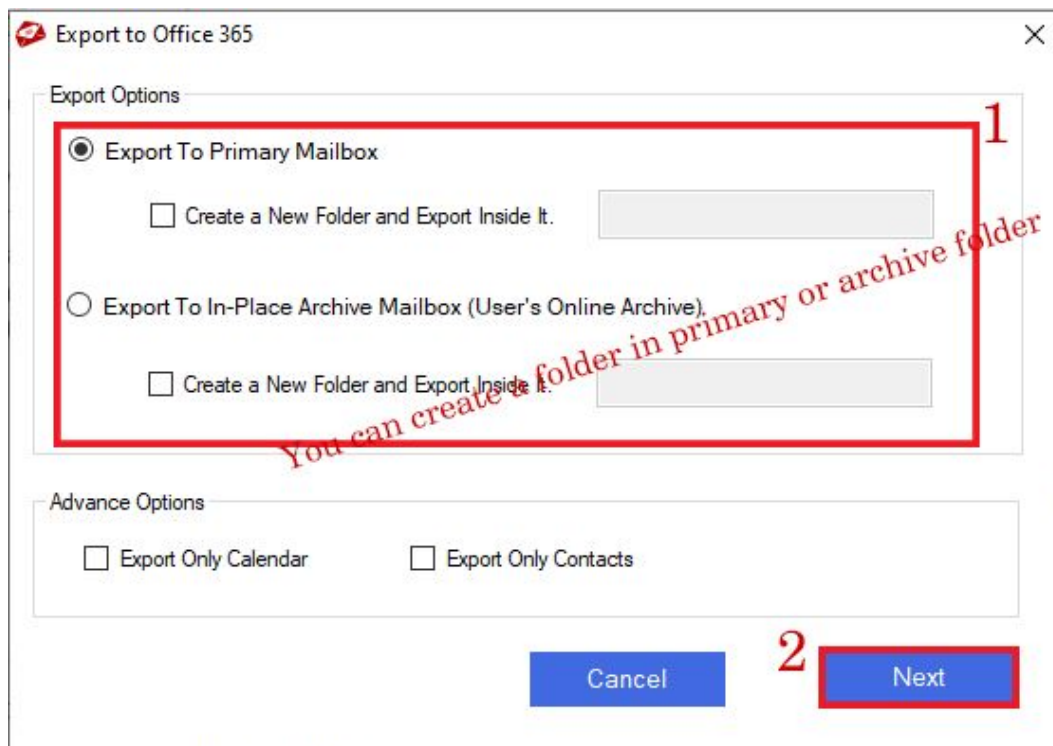
Steps to Migrate OLM to Office 365

Step 4. Follow the first 3 steps. Select the Export folder option as per your need and choose Office 365 as an Export option. Set filters, if you want. Provide a destination path to save the log file and click on the Next button.

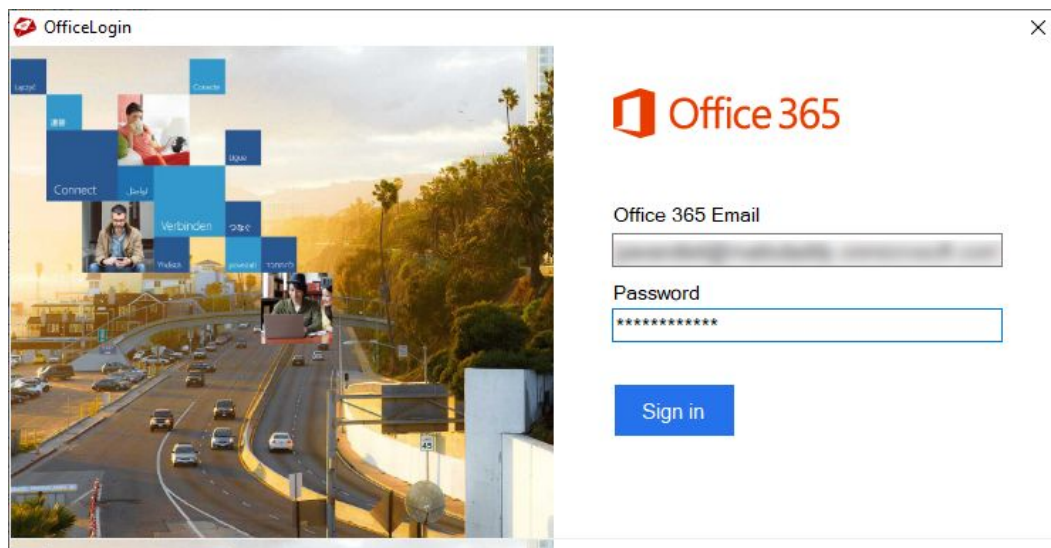
Note: To migrate OLM to Office 365, you need a Business or Enterprise License of the software.



Step 5. From the Export to Office 365 Window, select the primary or In-place archive mailbox option and click on the Next button.



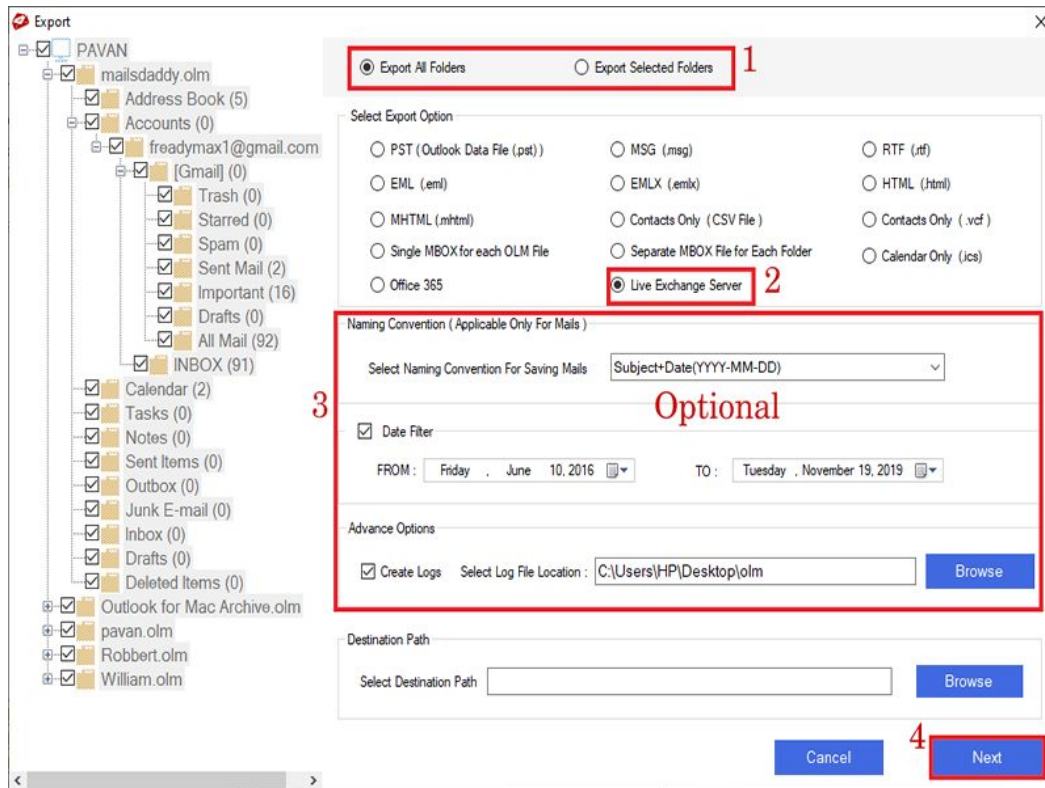
Step 6. Provide Office 365 login credentials and click on the Sign-in option.



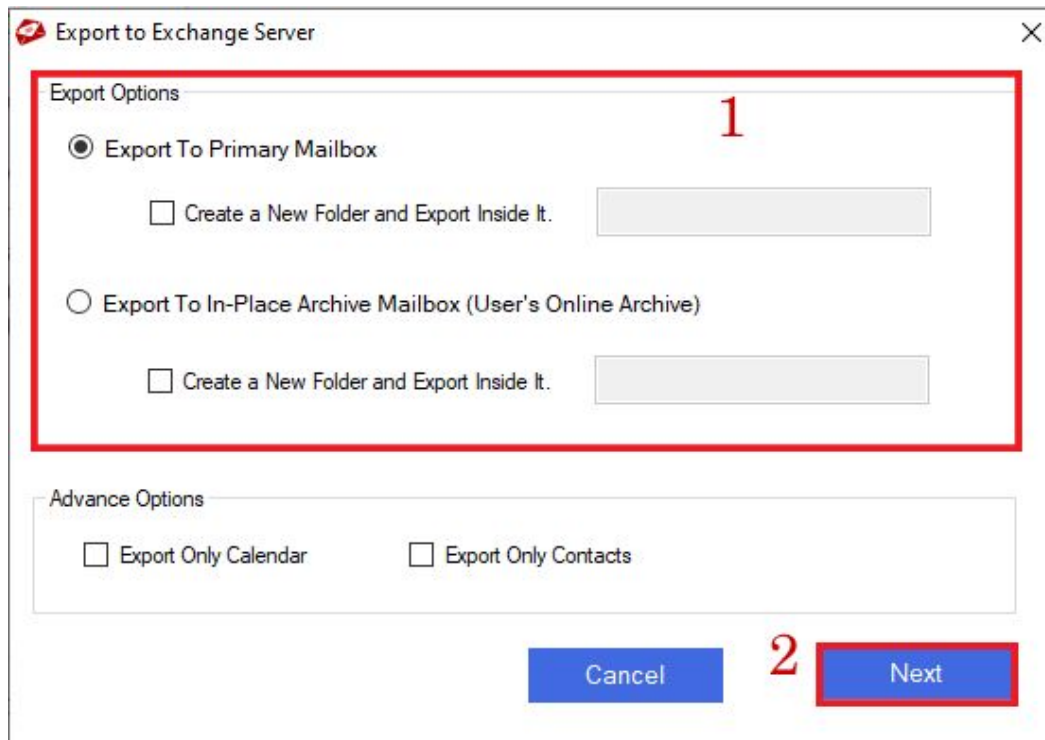
Steps to Import OLM to Live Exchange Server

Step 4. Follow the first 3 steps. Select the Export folder option as per your need and choose the Live Exchange Server option. Set filters, if you want. Provide a destination path to save the log file and click on the Next button.

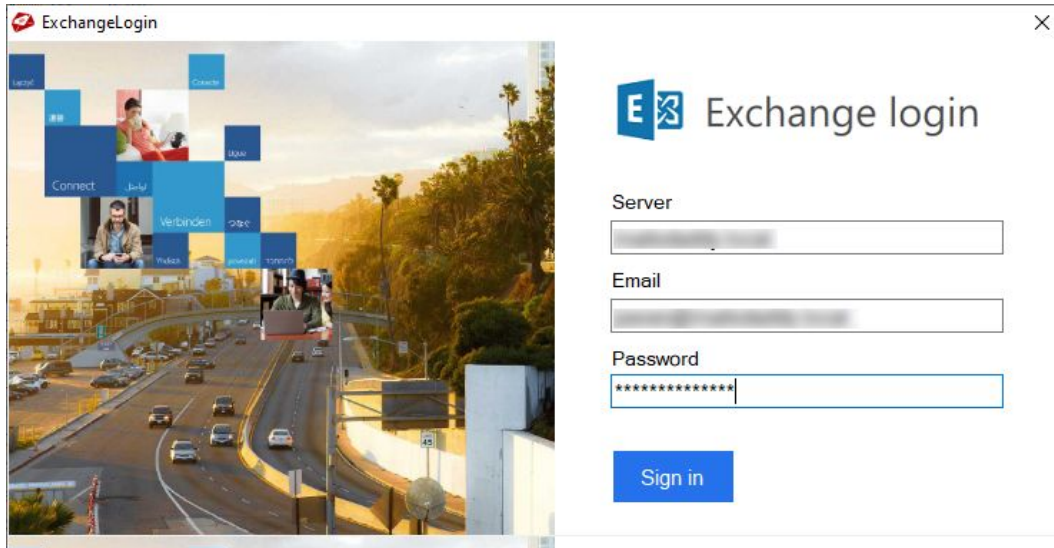
Note: To import OLM to Live Exchange Server, you need a Business or Enterprise License of the software.



Step 5. From the Export to Exchange Server window, select the primary or In-place archive mailbox option and click on the Next button.



Step 6. Provide Server Name and user login id, and password. Click on the Sign-in button to start the migration process.



The image shows a screenshot of the ExchangeLogin application window. The window title is "ExchangeLogin" and it has a close button (X) in the top right corner. The background of the window features a collage of images and text in multiple languages, including "Connect", "Verbinden", and "توصيل". On the right side of the window, there is a login form with the following elements:

- Exchange login** logo and title.
- Server** label followed by a text input field.
- Email** label followed by a text input field.
- Password** label followed by a password input field containing ten asterisks.
- A blue **Sign in** button.